

TRACKS



November/December 2014

Volume 27, No. 6



On the web: <http://angeles.sierraclub.org/gls/>

White Mountain on Labor Day Weekend

by Susan Campo, story and pictures

The GLS Labor Day Weekend trip to the White Mountains was a real “HIGH” for 12 participants.

Heather was a great Assistant Leader as always and was able to go early and secure sites for the group. Bruce did the same so that when Susan arrived on Thursday afternoon, our group had no troubles at this first-come-first-served Grandview Campground. We did an early

bird hike to the Grandview Mine and waited for everyone else to arrive on Friday or Saturday.

On Saturday, Susan Campo and Heather Sargeant offered a wonderful day in the Bristlecone Pines Forest. We attended a Ranger talk/walk and then led our own hike through the Methuselah Grove. We saw the new 20 minute film in the Visitor’s Center. No one turned down the treats offered by the Inyo National

Park on the second anniversary of their new Visitor’s Center.

The Bristlecone Pines grow in the poorest soil, not even suitable for sagebrush and at an elevation from 10000 to 11500 feet. We tried to find the oldest of the trees, which can live to 5000 years old. We saw the full range of their life span from newly sprouted to very dead! A sculpture garden for photographers! Meanwhile, Susan was making sure

(Continued on page 6)



On the trail to across the open plateau before crossing a saddle and then climbing switchbacks up to the peak

| | |
|---------------------------------|-----|
| GLS Information..... | 2 |
| Chair’s Message, Safety Crnr .. | 2 |
| Outing Reports..... | 3-6 |
| Conservation Notes | 6 |
| Outings & Events | 7-9 |
| Calendar | 10 |
| Leader Contact Info | 11 |
| Important Outing Info | 11 |

Mt. Disappointment & San Gabriel Peak

by Nancy Beverly

Oct. 11, 2014—girls’ night out! Okay, it was really girls’ day in the mountains. With Dora and Gail as our leaders, we made a steep and steady climb to Mt. Disappointment and San Gabriel Peak on a day that FINALLY felt a little autumn-like instead of the Endless Summer we’ve been

living with. All told we did 4.5 miles and managed to figure out the car shuttle. This was another hike where yours truly hadn’t been to this area since the Station Fire turned the place into a forest of burnt trees and poodle dog bush. Sigh.

Interesting moment: we saw a dead fox
(Continued on page 5)

Message from the GLS Chair

Well, we're almost finished with 2014. It's been a great year for GLS, and I hope it's been a great year for each and every one of you.

As you know, it's our tradition to have

a holiday party in December, at which we present awards, try to out bid each other at the silent auction, and eat way too much great food. So please plan to attend, and please be sure to let myself or the board know of any GLS leaders or participants who you feel should be recognized for their work or actions from the past year. And if you have any special memories of this past

year, please let us know those, too. We hope to honor not just individuals, but outings or places that made an impression on us in 2014.

Thanks for all you've done, and for all your support of GLS this past year and every year. Happy Holidays from Marie, Tim, Amanda, S.K., and Dawn.

Marie Ammerman

Safety Corner No. 9 Driving and Winter

By Marie Ammerman

It's almost time for that wonderful season called The Holidays, and the greatest danger, besides eating too much, is not usually found on the trail, but on the roads. It's very, very rare to have a trailhead right outside one's home, so, naturally, we're all driving to the start of our outings, or to holiday events. You all know not to drink and drive, to drive defensively, and to carry emergency equipment, so all I want to say on this subject is to please remember that GLS loves you, too, and we don't want to lose you. So play it safe out there!

It's also time to contemplate winter outings. GLS usually only schedules one snowshoeing outing each year, but many of you may go out on private jaunts. This is great! Snowshoeing is great exercise, and the forests and mountains are beautiful with a coating of white. To stay safe, you need to plan even more carefully than at high

summer, mainly in the navigation department. The terrain will look quite different when snow-covered, so go with an experienced leader, or head to resort areas with well-groomed, well-marked trails. If you do want to venture out on your own, always go with a buddy, brush up on your navigation skills, and take extra clothing and food with you. I can't emphasize enough how important it is in this situation to have a good topo map and a working compass, and to know how to use them properly. Even if you have a GPS unit, you really need to bring a map and compass as a backup. Batteries are drained quicker in cold weather, and you'll want to have a back up if your GPS unit fails. Be sure to bring extra batteries, too, and keep them inside your pack or in a jacket pocket to keep them warm.

If you have a small backpacking stove and a metal cup, take it; if you do get turned around and have to bivouac over night, you'll be able to melt snow for water or for heating tea or cocoa. And don't be afraid to make the decision to stay put over

night. It's better to wait for daylight than to risk getting even farther off trail than you are, or falling off a ledge or cliff in the darkness. If you've prepared for any emergency, you'll make it through the night all right, even if you do get cold.

Other things to consider: If it is still snowing when you start your hike, remember you'll have to clean off and dig out your car to get home, so save some energy and daylight for this. Bring a shovel and ice scraper for this; have chains in your car that you know how to use. If you are hiking in avalanche areas, be sure to study up on these phenomena of nature and what to do to be safe; it's a big topic all by itself and there's no room in this column for it this time. The internet and libraries have many good resources.

Last, if you really want to learn about snow travel and snow camping, sign up for WTC, offered by the Angeles Chapter, beginning in January. The Wilderness Travel Course will teach you all that and more. It's well worth the time!

Happy Holidays, everyone!

Information about GLS

General questions about GLS, call Marie at 818-406-3529 or Mike at 818 399-4035.

Questions about a specific event, please call the leaders listed in the schedule. Contact info is inside the back page.

Sign up for the FREE GLS email list, with a weekly email digest of GLS events, go to: <<http://angeles.sierraclub.org/news/MailingLists.asp>>. Your email address remains confidential and is not displayed to others.

Next GLS Management Comm. Meeting

The next GLS management committee meeting has not been scheduled yet.

GLS management committee meetings are held about every two months, on weeknight evenings, by conference call. All GLS subscribers are welcome.

You may call one of the committee members to confirm meeting time, how to call in, or ask about the agenda, or for other information.

GLS Mission

The Gay & Lesbian Sierrans Section of the Angeles Chapter fosters the purposes of the Sierra Club by making available a wide range of events for gays, lesbians, and their friends. These activities include conservation, education, hikes, bike rides, beach walks, car camps, boat trips, social gatherings and fundraising.

GLS Newsletter

The GLS newsletter, TRACKS, is published six times a year. Annual subscriptions are \$15 for issues sent by US mail, \$10 for issues sent in PDF format by email, \$25 for both. Three year subscriptions are, respectively, \$35, \$20, and \$55. Send subscription requests and related membership correspondence to: GLS, P.O. Box 1300, South Pasadena CA, 91031-1300.

Mgmt. Comm. 2014

Marie Ammerman,
Chair
Tim Vo,
Co-Chair
Amanda Smith,
Secretary
SK Chiou,
Treasurer
Dawn Wilson,
Member at Large

Other GLS Volunteers

Membership,
Jeff Cuevas
Conservation,
Tom Molloy
Webmaster,
Alan Schimpff
TRACKS Editor,
Jeff Johnson

.....
Our outing volunteers are listed on page 11.

GLS Election

If you are a GLS subscriber...

Please vote for management committee members who will serve as the next two years. You can vote by mail or by email—instructions on the ballot attached to this issue.

Why wait for Spring cleaning?
If you have trail guides, travel books, bestsellers, field guides, camping or hiking gear in good/clean condition (tents, sleeping bags, boots, poles, backpacks, etc), or anything else you want out of the closet - come to the GLS holiday party and donate them to the silent auction fundraiser. All proceeds go to GLS. Barbara Edwards will be our auction coordinator.

GLS Holiday Party

Sat., Dec. 6, 2 - 6 pm
at Grace and Mary's house in Los Angeles

More information on page 8

GLS Photo Contest

It's back! Submit your pictures from GLS hikes in the past year. We'll all be looking at them at the Holiday Party on Dec. 6 and voting for our favorites then.

- Any GLS subscriber may submit up to 10 photos taken on GLS outings between Dec. 1, 2013 and Nov. 30, 2014.
- Submit photos before December 3 to: <alanschimpff@netscape.net>.
- Submit photos as digital files, JPEG format (.jpg). Any size is all right, but very large photos may be resized smaller to work better online.
- Photos may be of any subject relevant to the mission of GLS.
- Consider whether the people in your

- pictures are OK with it.
- Holiday Party attendees will vote for their favorites at the party.
- Winners will be published in Tracks.
- Submit each photo with:
 - Your name
 - Name and date of the GLS outing when you took the picture
 - Optional title for the picture
 - Optional description, up to 50 words long
 - Optional contest category (or categories) for each picture
- Voters will vote for their favorites overall and in some categories:
 - Group shot
 - GLS people
 - On the trail

- In camp
- Flora (plants and trees)
- Fauna (animals)
- Landscape and scenery
- Humor
- GLS will provide a slide show of the pictures at the Holiday Party, so we can view them there before voting.
- Photos will be posted for viewing online at: <<http://www.flickr.com/photos/43971315@N03/>> without your name but with the descriptive info you provide and with an identifying number. The Flickr address will be posted on our website, <angeles.sierraclub.org/gls>
- In case of questions, GLS mgmt comm members will decide how to proceed.



Sierra Club Open House at the Zoo

GLS had a table at the September 25 Sierra Singles section-

sponsored Sierra Club open house at the Los Angeles Zoo. Thanks to the GLS volunteers who staffed our table. Thanks to Donna Specht for these photos of our table at the event.

25th Anniversary GLS T-Shirts!

The GLS 25th Anniversary logo has been printed on heather gray T-shirts, like the ones shown in the photo. T-shirts are \$15 each, available in unisex sizes Small/Medium/Large/X-Large.

To order a T-shirt, please make a check payable to "GLS" and mail to: Amanda Smith, 831 Kodak Drive, Apt. 1/2, Los Angeles, CA 90026. Please be sure to include the size of T-

shirt you are requesting along with your phone number and/or email address in case we need to get in touch with you. If you need the T-shirt shipped to you out-of-town, please contact Amanda with the details first so we can estimate shipping costs before you write a check.

Questions? Email Amanda at amandajillsmith@gmail.com.



Oops! The uncredited popsicle photo in the Huntington Beach article in the last issue was taken by Pam Prichard.



Sierra Madre to Orchard Camp

By Jeff Johnson, story and pictures

Saturday, October 25 we walked up the Mount Wilson Trail to Orchard Camp, halfway to Mt. Wilson. It started cool, with a thin cloud layer to keep us out of the sun. Lots of people out on the trail!

A first question once we were high enough to look south at the fuzzy horizon: are those mountains in the distance the Santa Anas or the San Jacintos? Somehow it's not obvious, though we have all been to both mountain ranges. They looked appealing mysterious in the morning haze.

Runners passed us in both directions as we slogged along up the hill. Other hikers rested in under trees. The four dogs with our group started out energetic and cheerful.

Susan and Diane were just back from their Mediterranean. Adventures. Susan told me about various events of their trip, the kind of material that Mike would recorded mentally, if he were there.

We rested at Orchard Camp and had our snacks. Orchard Camp was a considerable place during the "Great Hiking Era 1895-1938" that we have read about in John Robinson. Floods destroyed a lot of the camp and the trail that led to the camp. All that's left of the camp now are some stone and concrete foundations to sit on. In the middle of the site of the camp now is an enormous oak that would have been there long before the camp.

On the way down, the dogs were not so eager. Dora chanted to her dogs half the way down to keep them on their feet.

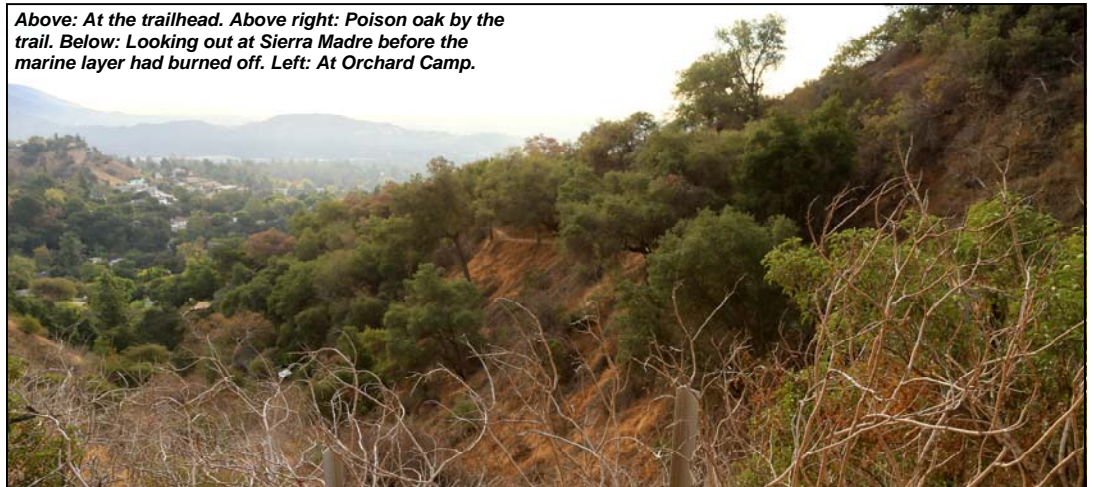
Observed on the trail. A patch of bright red fall foliage by the trail—yes, that is poison oak! Farther down, we wondered about a patchwork area we could see below in Sierra Madre. A garden with paths? Where the City recharges an aquifer with waste water? We weren't sure.

At the bottom of the trail, the historical society plaque erected in 1959 described the Mount Wilson Trail as being "unique for its scenic beauty." I wonder what it was like then, just after the Angeles Crest Highway had become the direct route into the mountains, while this foot path was still being restored. Today, the path is heavily traveled. You can tell that if it were not assertively maintained, it would quickly deteriorate and be unsafe for hikers.

After we said our goodbyes and see-you-next-times, some of us went to Wendy's place nearby for lunch in the backyard shade. Big salad, cold drinks, and delicious things off the grill. Thanks Wendy!



Above: At the trailhead. Above right: Poison oak by the trail. Below: Looking out at Sierra Madre before the marine layer had burned off. Left: At Orchard Camp.





Nancy and Jim led this 32-mile bike outing on the Ojai Valley Trail on Sept. 21. Most photos by Kyla Hjertstedt.



Disappointment & San Gabriel

(Continued from page 1)

on the way up—a very recent death, coyotes had not torn it to bits. We turned the hike into CSI San Gabriel as we tried out different theories to solve the murder.

Another interesting moment: we peered at the peak marker on San Gabriel and there was no elevation mentioned...even though there were words like "Elevation" on the marker! Fortunately we had fancy gadgets that told us we were at 6061'.



Above: On San Gabriel Peak. Below right: Checking the marker on San Gabriel Peak. Below center: Checking the map on Mt. Disappointment. Below left: Walking through the post-fire landscape.



Conservation Notes

By Tom Molloy

Please Support the Wildlife Overpass

Last month, over 300 activists, politicians, citizens, scientists, agencies and others met at Liberty Canyon near the 101 freeway adjacent the Santa Monica Mountains for a rally to support a proposed wildlife crossing that would connect the coastal side of the Santa Monica Mountains to the land side of the Santa Monica Mountains across the 101 freeway, which then connects to the Verdugos, Simi Hills and mountain ranges beyond through

patchworks of remaining open land. The fundraising and information campaign developed by the National Wildlife Federation is called, "Save the L.A. Cougars". A National Park Service ecologist calls the overpass the best hope for the continued survival of the Mountain Lion in the Santa Monica Mountains. The overpass would benefit bobcats and other wildlife as well. The location was picked due to the existence of parkland on each side of the freeway. The coastal mountain lions have the lowest genetic diversity of any population in the country due to isolation and inbreeding. The freeway prevents kitten litters from dispersing, which often results in the adult males

killing them as there is not enough habitat on the coastal side for all of them.

The overpass has support from most groups, agencies, legislators, etc, who are now challenged to find \$10,000,000 to construct it. While the campaign seeks to raise the funds, there are plans to improve current conditions by removing obstacles, fences, and unblocking an existing underpass, and by adding some fencing to keep lions off the freeway.

More information on this critical campaign is available at www.savelacougars.org.

Anyone interested in volunteering to help with the campaign should email Beth Pratt at prattb@nwf.org.

White Mountain

(Continued from page 1)

everyone had plenty of time to relax and acclimatize in preparation for our next day hike.

On Sunday we all rose early and headed up a long narrow gravel road to the trailhead at 11500 feet at the USC Altitude Research Center so we could begin our hike. After coaching how to breathe more efficiently at altitude, my group did very well. This year EVERYONE who started the hike summited at WHITE MOUNTAIN, 14525 feet... only 245 feet less than the famous Mt. Whitney, tallest peak in the continental U.S.A. Bravo for all of us, especially the many first timers!

That night the group relaxed around another campfire, but Susan and Bruce were already off to situate themselves for the Mt. Tom climb just across the valley.

What a wonderful way to end the summer season!



At the top of White Mountain, with Boundary Peak in the background.



Hiking in the Methuselah Grove



A bristlecone pine on a slope near the visitor center

Outings & Events

November

November 1, Saturday

**O: Vasquez Rocks
Dora Olea, Grace Hengst**

Amazing what 25 million years of earthquake activity can do! A beautiful outcropping landscape of rocks' history that began in prehistoric times when the sandstone rocks were uplifted at a picturesque angle, showing their jagged red features. In 1874 Tiburcio Vasquez, one of California's most notorious bandits, used these rocks to elude capture by law enforcement. It has been a popular filming location for movies, television shows and commercials. Will hike up to the Sanctuary Cave, over the Bandito Trail and the Geological Trail. About four miles with an elevation gain/loss to 50 ft. to 1000 ft. Great opportunities for taking pictures as well as identify many species of flora and perhaps fauna. K-9 welcome. Bring lug soles, lunch, sunscreen, hat and sunglasses as well as plenty of water. Contact Ldrs, Grace (323) 697-6886, or Dora (213) 200-0239 or chamacasister@gmail.com with any questions about the hike. Meet 9 am. From the Antelope Freeway (14) near Canyon Country, exit on Agua Dulce Road. Head north 1.5 miles. Agua Dulce swings west and you join Escondido Canyon Road, proceeding 0.25 miles to the signed Vasquez Rocks County Park entrance on your right. Rain cancels.

**Nov 7 - Nov 10, Fri - Mon
O: Joshua Tree - Carcamp
Dora Olea, Grace Hengst**

Circumstances of life have prevented us from putting one foot at J-T. Well, now we are going to put both feet: for one day, two, or three (you choose). We will have hikes from 8 miles rt. to a 5 miles rt. or if you choose just to read or catch up with your needlework, this is the trip for you. The campsite has a limited space for participants and parking; therefore, carpooling is recommended. Cost not exceed \$20.00 dollars. To reserve your spot, you MUST mail your check before November, Saturday 1st. RSVP and more details contact Ldr: Dora at 213-200-0239 or chamacasister@gmail.com.

**Nov 22 - Nov 23, Sat - Sun
O: Sugarloaf Mt. + Pine Knot Trail
Nancy Beverly, Mike Brostoff, Carol Jeffcoate (her provisional hike!)**

We had such a good time up at Big Bear last year, we're going to do it again – on different trails, though. On Saturday, we plan to hike Sugarloaf Mountain if the weather holds (i.e. no rain / snow). It's roughly 10 miles roundtrip with 2000' elevation gain, going up to 9952'. If you're planning on coming on that hike, get some rigorous hikes in so you can give it a good shot! On Sunday morning, Carol will lead her provisional hike, an easier hike – Pineknot Trail up to Grand View Point, six miles roundtrip, 1200, up to 7688'. If the weather is dicey on Sugarloaf, then Pineknot (+ some extra miles) may become

the Saturday hike. Or we may go snowshoeing both days! If you'd like to spend the night Saturday at Tammie & Kyla's (our gracious hostesses!) in Big Bear, RSVP to nancybeverly@sbcbglobal.net by November 15. If you're just doing the Saturday hike, RSVP by November 20th (by then we should know the weather forecast). Directions to the appropriate trailhead & the gals' home will be sent out. Sorry, no showing up at the last minute – we may have to change plans and who knows what the cell phone service will be. For the hikes, bring the ten essentials and for staying overnight, bring money for dinner at a restaurant, whatever you'd like for breakfast, and a sleeping bag. Overnight indoor guest limit is eight; there is a little room on the outdoor porch for sleeping under the (chilly) stars and driveway space for camper type things (no tents in the yard, sorry!).

**November 29, Saturday
O: Topanga Canyon: Los Liones-Trippet Ranch
Anna Baum, Jeff Johnson**

Come work off that pumpkin pie! 13 miles round-trip, strenuous in parts, 1,300 feet elevation gain. After a steep, 1.5-mile climb up lovely shaded switchbacks through chaparral, we'll follow a steep winding fire road that affords stunning coastline vistas and beautiful views of Santa Ynez and Topanga Canyons on either side. We'll pass the turnoff to the Parker Mesa Overlook, then continue on East Topanga Fire Road another 2.6 miles,

(Continued next page)

Weekly Griffith Park Conditioning Hikes

What: Every Wednesday night, join us for a moderate (strenuous if you are out of shape) hike to Mt. Hollywood, 6 miles, 1145' gain/loss. This is a great mid-week workout. Lug-soled boots are best for traction, but some hikers wear sneakers. Bring a quart of water, snacks if you like, and a flashlight if not used to hiking in the dark. We have a few tiny breaks on the way up, stop at the top, gawk at the city lights until we get a chill, and then

return to our cars by approx. 9:30 p.m. Dogs are welcome; bring a leash and extra water. Rain cancels. **When:** Every Wednesday, (except holidays) 7 p.m. sharp, end by 9:30 p.m. **Where:** The Crystal Springs Griffith Park HQ/Visitors Center/Ranger Station, 4730 Crystal Springs Drive, LA. (Note: Mapquest, Google Maps, etc. may be misleading.) **Directions:** (1) From Los Feliz Blvd. (which

you can reach from I-5 or coming from Hollywood), turn north on Crystal Springs Dr. Proceed 0.5 mi. to the 3-way stop sign, go straight, and proceed 0.6 mi. and turn right in the driveway just after the Ranger Station. Drive around behind the Ranger Station to Park. Then meet us in the courtyard in the center of the buildings (picnic tables, soda machine, big tree). (2) From Fwy. 134 East, exit Victory, turn right at bottom of ramp. Make immediate left onto Zoo Drive. Drive through

the park, passing the zoo on your right and the Gene Autry Museum on your left. Curve around and pass the golf course. You'll come to a stop sign at Griffith Park Drive & Crystal Springs Road (which is the road you're on now, it changes names). Proceed one more block to the next stop sign at the Ranger Station and turn left. Drive all the way around behind the Ranger Station to park. Then meet us in the courtyard in the center of the buildings (picnic tables, soda machine, big tree).

Signal Hill Conditioning Walks

What: Up, over and around Signal Hill. 3-4 miles, 500-750 ft. gain/loss. Easy if you are in good shape, moderate and

maybe even strenuous if you are out of shape. Walking on pavement and gravel. Sensible walking shoes,

water, layers for cool evening breezes. Drizzle goes, rain cancels. Questions? Call Jeff 562-434-8473. **When:** Every *last* Wednesday of the month (except

holidays), at 7:00 pm. Back at the cars around 8:30 pm. **Where:** Meet on Industry, just west of intersection with Redondo, in Signal Hill. Plenty of street parking.

Outings and Events

mostly level, to Trippet Ranch Visitor Center (where the December 13 hike will begin). We will eat lunch there and return the way we came. Wear sturdy shoes, bring at least two quarts water, 10 essentials, lunch, snacks, sunscreen. Heavy rain cancels. From Highway 1/Pacific Coast Highway in Pacific Palisades: turn north on Sunset Boulevard. Drive 0.3 mile and turn left on Los Liones Drive. Follow Los Liones Drive to its end in about a half-mile and park in the lot across from a church or on the street. From the 405 and Sunset: Travel west out Sunset Blvd., past Temescal Cyn, and a block past Palisades Drive, turn right up Los Liones. Hike begins at 9 a.m. sharp. Heavy rain cancels. Questions? Contact Anna at 310-990-0610.

December

December 6, Saturday

O: Holiday Party

Grace Hengst, Mary Adair

This year the GLS Holiday Party is again at Grace and Mary's Mount Washington home. This is a time to talk with other GLS members and just have fun sharing the holiday spirit! The festivities start at 2 pm and finish at 6 pm. Please bring a potluck item to share, and let Grace



Resting in the sun against the wall of the house at the summit of White Mountain. Photo Dora Olea.

know what item you plan on bringing. GLS provides beverages, plates, silverware, and lasagna (vegetarian and meat). There will be 2 door prizes, a "Half & Half" raffle in which there will be 30% to first winner, 20% to second winner, and half goes to the GLS treasury. There will also be a silent auction, so please bring a new or used hiking/camping/other item, in good condition, to the party. The proceeds go to GLS. Please reclaim any unsold items at the end of the auction. Also, view and vote on photos submitted for the GLS photo



White Mountain in the distance, seen over a ridge during the bristlecone pine hike

contest. We will count the ballots for election to the GLS Management Committee and announce the new board members at the party. Send a check to "GLS" for the admission charge of \$5.00. Send to: Grace Hengst, 1717 Burnell Drive, Los Angeles, CA 90065. Enclose SASE if you need directions to the house. Note: Mapquest can get you lost in this area, so call Grace at 323-697-6886 in the days before the party if you need clarification. Parking: plan to park on the surrounding streets, as there is no legal parking on Burnell Drive.

December 13, Saturday

O: Topanga Area

Dawn Wilson, Teresa Nick

9.6 miles, rolling, with 1600' gain/loss. Join us for a figure-8 loop starting and ending at the Trippet Ranch trailhead in Topanga Canyon (farther point of the Nov. 29 hike). Rolling hills provide alternating canyon greenery and expansive views of the Pacific. We'll start out on the Musch Trail, winding through a verdant hillside punctuated with openings that allow views of the

Santa Monicas. Gaining Eagle Rock (1957'), we'll admire the sandstone and look in every direction. Next, we'll dive into Garapito Canyon, surfacing at Hub Junction and then head back on fire roads with constant vistas for the rest of the hike. Rain Cancels. Bring: At least 2 liters of water, lugsoles, 10 essentials. Pace: moderate. Time: meet 8: 45 AM, depart 9 AM sharp. Getting there: 20829 Entrada Road, Topanga Canyon, CA 90290. From 101, drive ~7.7 miles south on Topanga Canyon Road and

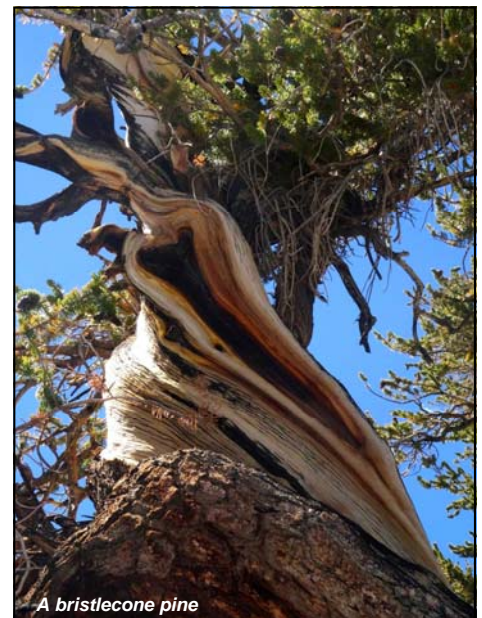
take a left on Entrada Road. Drive on Entrada Road for one mile, following signs for Topanga State Park. There is a \$10 day-use fee to park at Trippet Ranch. Free parking is available along the road outside the park - but make sure that your wheels do not cross the white line on the road. Questions? Contact Teresa 612-384-0421.

December 20, Saturday

O: Red Box (4640') to Strawberry Peak (6160')

Gail Wise, Grace Hengst

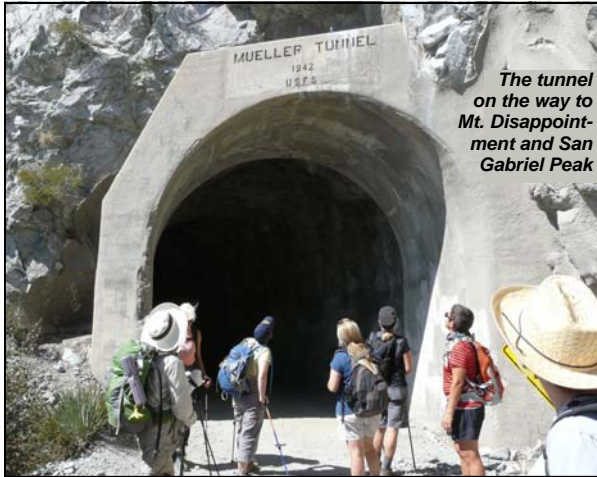
Join us as we return to Strawberry Peak after a long hiatus due to the trail's closure after the Station Fire. On this moderately challenging outing, we'll hike for a mile or so to a saddle and follow the trail for another mile or so as it hugs and serpentine its way along the mountainside, offering beautiful views all along the way. We'll then start our steep scramble up to Strawberry Peak (6,160') and return the way we came. Total distance is 6-7 miles. Total time on the trail should be 4-5 hours. Rain or snow cancels (or shortens if we encounter it near the peak). Meet at 8: 30



A bristlecone pine

Outings and Events

am at the La Canada rideshare point. From there we will have a half hour ride to the trailhead at Red Box. Lug soles are a must due to the steep scramble to the peak, i.e. no sneakers. Bring ten essentials, particularly at least two liters of water, an Adventure Pass if you have one, sunscreen, gloves, hat, layers, and lunch. Contact Gail with questions or concerns. 310-433-2298 or gailwise2@gmail.com.



The tunnel on the way to Mt. Disappointment and San Gabriel Peak

Future Outings

January 4, Sunday

O: Hancock Park/Larchmont/Windsor Square Urban Walk

Barbara Edwards, S.K. Chiou

Come enjoy the history and architecture of this fascinating area. Hancock Park was once home to such notables as Howard Hughes, Ellen Degeneres, Nat King Cole and others. We start by strolling through Larchmont Village, a small café-laden shopping area where the locals hang out. Then we will explore a historic preservation overlay zone where the grand old mansions of Windsor Square are still standing. Next we will return to the village for a quick lunch and then meet again to continue on the second part of the walk where we will stroll by Mae West's home and other mansions in a shady tree-lined neighborhood. Meet at 8:30 AM in front of Noah's Bagels at 250 N. Larchmont Blvd. About a mile east of Highland. Walk starts promptly at 9 AM. Free all-day parking in the neighborhood south of the village. Bring water and lunch, or money if you want to eat out. Approx 5 miles, 200 ft elevation gains. Dogs welcome. Rain cancels hike. Please RSVP to leader if possible in case of last minute changes. greyhund@sbcglobal.net.

Feb 13-16 Fri-Mon Presidents' Day

Joshua Tree National Park

Barbara Edwards, Grace Hengst,

Join us President's Day weekend at the Black Rock Canyon campground (elev 4000), located in the northwest corner of the park, just 5 miles from Yucca Valley. Campsites are dispersed on the hillside at the mouth of the canyon, and surrounded by Joshua trees, junipers, cholla cacti, and desert shrubs. Trailheads to scenic hiking

trails in the hills are easily accessible from the campground. They take hikers to ridgelines overlooking the snowy peaks of San Jacinto and San Geronio via Eureka Peak, Panorama Loop, and Warren Peak trails.

If you get tired of scenic hikes, you can head into town.... Yucca Valley offers restaurants, and shopping. Flush

toilets and water are available at the campground. Showers nearby. Expect daytime temperatures in the mid 60s and nighttime temps to dip into the 30s. Dogs permitted in campground, but not on most trails. Cost is \$32 per person for 3 nights camping. A few RV sites (no hook-ups) are available. Please send check (made out to GLS) and email address to: Barbara Edwards, 1739 S. Sherbourne Dr., L.A. 90035

March 21 - 22, Sat - Sun

O: Backpack: CHRT, Joshua Tree National Park [2nd half] Dora Olea, Jeff Johnson

Backpacking at Joshua Tree on the California Riding and Hiking Trail is our next adventure. This time we will hike the second half of this extraordinary trail covering about 21.5 miles in two days. It is a beautiful experience that you cannot miss. We will look out for the oldest Joshua tree, hoping to see it alive, or its remains. On Saturday, we will pack in about 10 miles and set up the camp in the middle of

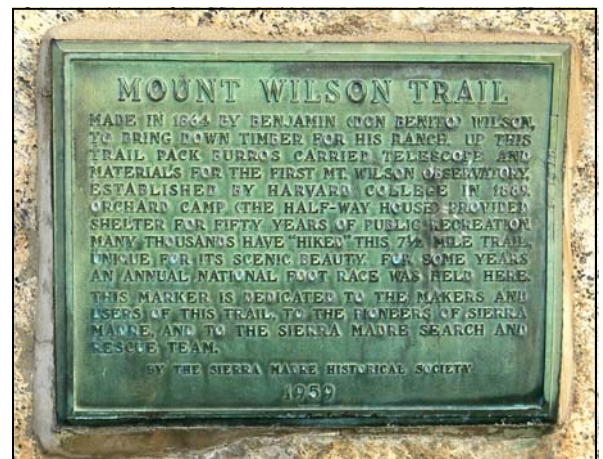
nowhere. On Sunday, we will hike out around 11 miles. This trip requires backpacking experience and involves a car shuttle. Optional Mexican Feast on Sunday. Space is limited, RSVP by Feb. 28th, 2015. For more info and RSVP Contact Ldr: Dora at chamacasister@gmail.com.

March 29, Sunday

O: O'Melveny Park to Mission Point Dora Olea, Jeff Johnson

5.5 miles, 1400' gain/loss. Walk up through green hills and spring wildflowers above the San Fernando Valley, with the view of the San Gabriels to the east, LA and the Santa Monicas to the south and west. More info next issue of Tracks.

Below: Signs seen at the bottom of the Mount Wilson Trail.



DANGER

Due to fires and a 3 year drought, foothill cities are experiencing an increase in the bear population. Bears have been spotted as far as a mile down into the cities foraging for food and water. They have been seen in the city at all hours of the day and night. If you are out walking (alone or with a group) it is advised to make as much noise as possible so as not to startle them. For the most part bears are shy and try to stay away from humans. Bear are most dangerous when you get between the mother and her cubs, when they are eating or when just surprised by your presence. If approached by a bear never run from them, try to look big, put your hands above your head and yell as loud as you can and slowly back away

On Thursday, October 23 at 7 p.m. in the Monrovia Public Library there will be a Public Safety Forum regarding BEARS IN YOUR BACKYARD. If you live around here or walk around here you may want to consider attending this meeting for the latest information update.

For questions and up dates call the SMPD
626.355.1414



November and December 2014

| Sunday | Monday | Tuesday | Wednesday | Thursday | Friday | Saturday |
|--|---|-----------|---|-----------------------------------|--|---|
| NOV 2 | 3 | 4 | 5 Griffith Park Nancy or Gail, Dora | 6 <small>full moon</small> | 7 Joshua Tree Carcamp Dora, Grace <i>Through Monday</i> | NOV 1 Vasquez Rocks 8 |
| 9 | 10 <i>End Joshua Tree Carcamp</i> | 11 | 12 Griffith Park Dora, Nancy | 13 | 14 | 15 |
| 16 | 17 | 18 | 19 Griffith Park Nancy, Dora | 20 | 21 | 22 Big Bear Weekend Nancy, Mike, Carol (provisional) <i>Through Sunday</i> |
| 23 End Big Bear Hiking Weekend | 24 | 25 | 26 Griffith Park Nancy, Gail Signal Hill | 27 | 28 | 29 Topanga—Los Liones to Trippet Ranch Anna, Jeff J. |
| 30 | DEC 1 | 2 | 3 Griffith Park Dora, Gail | 4 | 5 | 6 <small>full moon</small> |
| 7 | 8 | 9 | 10 Griffith Park Nancy, Dora | 11 | 12 | 13 Topanga—Trippet Ranch, Eagle Rock, and more Dawn, Teresa |
| 14 | 15 | 16 | 17 Griffith Park Dora, Mike | 18 | 19 | 20 Red Box to Strawberry Peak Gail, Grace |
| 21 | 22 | 23 | 24 Griffith Park canceled | 25 | 26 | 27 |
| 28 <hr/> JAN 4 LA Urban Walk Barb, SK | 29 | 30 | 31 Griffith Park canceled Signal Hill canceled | JAN 1 | 2 | 3 |

GLS Leader Contact Information

Please call after 9 AM and before 9 PM

| | | |
|------------------|--------------|---------------------------|
| Alan Schimpff | 310-589-9125 | alanschimpff@netscape.net |
| Amanda Smith | 323-646-0771 | amandajillsmith@gmail.com |
| Anna Baum | 310-990-0610 | ambaum@dslextreme.com |
| Anne Mullins | 323-522-6640 | hike2thepeak@gmail.com |
| Asher Waxman | 323-876-2889 | amuirman@yahoo.com |
| Barbara Edwards | 310-839-0593 | greyhound@sbcglobal.net |
| Beth Epstein | 562-439-0646 | b.epstein@verizon.net |
| Dawn Wilson | 612-384-0180 | dawnxwilson@gmail.com |
| Diane Ru | 626-688-8642 | zappydz@gmail.com |
| Dora Olea | 213-200-0239 | chamacasister@gmail.com |
| Gail Wise | 310-433-2298 | gailwise2@gmail.com |
| Grace Hengst | 323-697-6886 | gracehikes@roadrunner.com |
| Heather Sargeant | 909-336-2836 | heathercsoo@aol.com |
| Jeff Bates | 310-452-4929 | jbatesla@aol.com |
| Jeff Cuevas | 626-644-9879 | cuevas777999@yahoo.com |
| Jeff Johnson | 562-434-8473 | jgj@cheerful.com |
| Jim Angus | 323-895-0001 | jim@jimangus.com |
| Judith Demarah | 818-451-8403 | |
| Karen Lovett | 562-438-3418 | klovett2000@hotmail.com |
| Kirk Olsen | 562-434-8675 | kso@kirkolsen.com |
| Laura Rainey | 562-438-3418 | geowmn@verizon.net |

| | | |
|----------------|--------------|-----------------------------|
| Marie Ammerman | 818-406-3529 | ammermanm@yahoo.com |
| Mary Conte | 213-810-3939 | maconte@hotmail.com |
| Mike Brostoff | 818-399-4035 | mbros4162@yahoo.com |
| Nancy Beverly | 818-681-5192 | nancybeverly@sbcglobal.net |
| S. K. Chiou | 714-554-9513 | skchiou@yahoo.com |
| Susan Campo | 626-688-8642 | susanlucillecampo@yahoo.com |
| Teresa Nick | 612-384-0421 | teresa.nick@me.com |
| Tom Molloy | 310-589-9125 | tomsmolloy@yahoo.com |

GLS Outings Volunteers

Mike Brostoff, Outings Schedule
Contact Mike about scheduling outings, to check for available dates, and to submit write-ups.

Dawn Wilson, Outings Liaison to Angeles Chapter
Contact Dawn about questions of leadership requirements and Sierra Club

Outings Policy. Dawn is the primary person to read the communications from the Angeles Chapter regarding outings and inform the other leaders.

Laura Rainey, Weekly Reminder
Laura sends out the weekly email announcing upcoming events. If an event must be altered or canceled after publication, e-mail Laura and cc Mike.



Looking down toward Ely, Nevada from the road up White Mountain. Photo Susan.

Important Outing Information

Waiver

To participate in a Sierra Club outing, you must sign a liability waiver. If you would like to read a copy of the waiver before the outing, go to: <http://www.sierraclub.org/outings/chapter/forms/>, or call 415-977-5630.

Rating Codes

These codes indicate the technical difficulty, not the strenuousness.

O Applies to uncomplicated outings such as hikes on trails or the equivalent (with minimal navigation skills).

I Includes outings that involve cross-country travel where navigation is necessary. Rougher ground than "O" outings may be traversed, and use of hands for balance may be necessary. Climbing level: 2nd class terrain.

C Events under external

control of a non-Sierra Club entity, (i.e. ranger, guide, concessionaire).

Outing Reservations

Reservation fees of from \$5-\$15 are refunded only when you show up and if they aren't needed to offset costs.

Cancellation policy on more expensive trips is as follows: Cancellation within 30 days, no refund without replacement. If your spot is filled, 90% will be refunded. This policy is in effect unless the leader states otherwise in writing. Always send two SASEs, contact and drive/carpool information. Make checks payable to "GLS".

Dogs

For most people, the presence of a well-behaved dog can be entertaining, or at worst a mild annoyance. However, this is not true for everyone. Some people suffer from various

levels of fear of dogs. Because of this, and the potential intrusion on wildlife, the Sierra Club policy is that dogs are not allowed on Club outings unless the write-up states DOGS OK. Make sure you bring adequate food, water, a bowl, and a long leash.

Seller of Travel Notice

CST 2087766-40. Registration as a seller of travel does not constitute approval by the State of California.

Adventure Pass

National Forests in Southern California (Los Padres, San Gabriel, San Bernardino, and Cleveland) require parked cars to display an Adventure Pass. The pass is available from ranger stations, sporting goods stores, and other local merchants and costs \$5 per day or \$30 per year. Plan on getting it before your outing, as most outlets do not open early. Many Sierra Club members dispute this user fee and

protest it by not buying a pass, possibly incurring a ticket. The choice is yours.

Carpooling

To facilitate the travel logistics for outings, participants often make carpooling arrangements. The Sierra Club does not have insurance for carpooling arrangements and assumes no liability for them. Carpooling, ride-sharing, or anything similar is strictly a private arrangement among participants. Participants assume the risks associated with this travel.

Rideshare Points

Directions to all rideshare points in the Angeles Chapter Schedule of Activities or at: http://angeles2.sierraclub.org/get_outdoors/know_you_go/rideshare_meeting_places

La Canada Rideshare Point

Exit 210 at Rte 2 / Angeles Crest Hwy. Go N (uphill) 1/4 mi on Rte 2, park at curb on right, on long uphill.

TRACKS

SIERRA CLUB/GLS
P.O. BOX 1300
SOUTH PASADENA, CA 91031-1300

TRACKS

Subscribe to TRACKS, the GLS newsletter, and find out about all the GLS outings and events every month. You do not need to be a Sierra Club member to subscribe.

Name: _____

Address: _____

City, State, Zip: _____

Email: _____

- New Renewal Gift Change of Address
- Send print TRACKS by US mail \$15 - 1 yr; \$35 - 3 yr
- Send email TRACKS (pdf file) \$10 - 1 yr; \$20 - 3 yr
- Send print and email TRACKS \$25 - 1 yr; \$55 - 3 yr

Fill in this form and send it with a check made out to GLS to:
GLS
P.O. Box 1300
South Pasadena, CA 91031-1300



Contributions, gifts and dues to the Sierra Club are not tax-deductible; they support our effective citizen-based advocacy and lobbying efforts. Of your dues, \$7.50 goes for a subscription to *Sierra* magazine, and \$1 for your chapter newsletter.

Name: _____

Address: _____

City, State, Zip _____

| Category: | Individual | Joint | Mail to: |
|----------------|------------|--------|--|
| Introductory | \$25 | | Sierra Club Membership Dept. P.O. Box 52968 Boulder, CO 80322 |
| Regular | \$39 | \$47 | |
| Supporting | \$75 | \$100 | |
| Contributing | \$150 | \$175 | |
| Life | \$1000 | \$1250 | |
| Senior | \$24 | \$32 | |
| Student | \$24 | \$32 | |
| Limited Income | \$24 | \$32 | |

When you join the Sierra Club, please use this form. The FRIP no. on the form brings part of your membership dues to GLS

FRIP#
F94QW04721