

TRACKS



March/April 2015

Volume 28, No. 2

On the web: <http://angeles.sierraclub.org/gls/>



Long Weekend Carcamp at Joshua Tree

Joshua trees in the hills of western Joshua Tree National Park, seen while hiking near Black Rock Campground. San Geronio Peak in the distance.

by Wendy T.

What do the Mojave Desert and Valentine's Day have in common?

Um, yes, good guess! Both involve love... in their own special way! For those who wanted a weekend getaway with their sweetie, the GLS camp-out in Joshua Tree National Park on Valentine's Day weekend was a chance to bask in the sunshine of each others' gaze during the day, and snuggle up together during the cold nights.

For others, it was a great time to feel affection and appreciation for a part of our surroundings that is often overlooked.

Twenty GLS members gathered for the 3-day weekend at Black Rock Campground

inside the park. Its isolation and beauty make it one of the best public campgrounds in Southern California. Our leaders, Barb and Grace, managed to get all of our sites grouped together, which made it nice and easy to wander over to share a drinkie or offer snacks and conversation.

The daytime temperatures were perfect,

75-ish with crystal-blue skies painting a gorgeous backdrop to the hardy desert terrain.

Saturday was our Big Hiking Day. Jeff J. wanted to scout a trail that he intends to backpack on this spring, so a bunch of people piled into cars and drove several

(continued on page 3)

GLS Information	2
Chair's Message	2
Safety Corner	2
Outing Reports	3-6
Outings & Events	7-9
Calendar	10
Leader Contact Info	11
Important Outing Info	11



Saturday dinner potluck around the campfire at dusk. Photo Jeff Johnson.

Message from the GLS Chair

Well, we're in the midst of winter, and we've had some rain, but not enough to stop the drought or our intrepid hikers.

We've had some good hikes recently, with new leaders stepping up and doing their provisional hikes. Thanks to all of you who have come out to do those hikes, or who have supported these folks in any way at all. Special thank yous to the

evaluating leaders for their time and thoughtful evaluations.

The board has also been busy, discussing things like the wording of our GLS mission statement to make it more inclusive; the role technology might play in our collective future, and ways to

bring in more members. Any ideas y'all might have on that last subject will be seriously considered, so send 'em my way!

Wishing all of you a pleasant finish to the winter and a happy Spring.

Marie Ammerman

Safety Corner No. 10 Awareness

By Marie Ammerman

One of the most important things we can do to stay safe when hiking is to bring our "A" game with us; in this case, the "A" stands for awareness. We all know we need to pay attention to the weather, or to where the trail branches off, but there are many other clues Mother Nature gives us about our surroundings that, if we notice and heed them, may, if nothing else, enrich our experience, but which may keep us safe, too.

Animal tracks are sometimes quite obvious; other animal signs include shredded tree trunks, often a sign of a bear marking his territory. Flattened vegetation may indicate either a deer or bear bed. Scat, or animal poop, is an obvious indicator of

animal activity in an area. It's important to note these things, especially in bear territory. Pay attention and don't throw a surprise party with a bear—such shindigs don't always end well. If you are interested in learning more about animal tracks and signs, there are good articles on the internet.

We also need to be aware of the presence of other people who aren't in our hiking group. Not only do we need to be considerate, but knowing where other people might be could be helpful if we have an emergency and need more help than our own group can provide. In the fall, paying strict attention to signs of human presence can save your life if hunters are around.

As you hike, pay attention to the sounds around you. We've all seen or read about the "eerie silence" right before some scary event in a story, but it's true, too, that when danger lurks nearby, animals and birds can

become very quiet. Of course, animals often think WE are the danger, so don't freak yourself out by looking for a predator who turns out to be you. Just keep an ear open.

The presence of larger birds, particularly scavengers, may signal that an animal carcass is in the area, which, in turn, could be a sign of a bear or cougar that has been snacking on it. We all know not to invite these guys to our lunch breaks.

It is also important to be aware of the people in your group, and of yourself. If someone is grumpy, including you, it might be time for a snack break. If someone is uneasy, don't discount it as just anxiety. We sometimes sense things before our mind can work out what the problem is, and it doesn't hurt to stop, look around, and make sure all is well. Hiking is great, but coming home alive is even better!

GLS Management Committee Meeting - Feb. 17 2015

The board met on Feb. 17th, all members were present except for Dawn.

S.K. gave a treasury report, the annual financial audit was submitted to the Angeles Chapter for 2014. S.K. also reported that our current account balance is at a healthy level.

The board discussed the topic of a new sign-in sheets option for the Wednesday night Griffith Park Hikes that would allow regulars to have a speedier sign in experience. Leaders may proceed with this plan on a trial basis.

In addition the board discussed the future of

TRACKS and the need for a new, updated, GLS website. During this discussion the future of GLS' membership database was also discussed as was the possibility of moving it to a different location.

The next meeting is scheduled for April 21st at 6:30 via conference call.

Kyla Hjertstedt and Tammie Barta

Information about GLS

General questions about GLS, call Marie at 818-406-3529 or Mike at 818 399-4035.

Questions about a specific event, please call the leaders listed in the schedule. Contact info is inside the back page.

Sign up for the FREE GLS email list, with a weekly email digest of GLS events, go to: <<http://angeles.sierraclub.org/news/MailingLists.asp>>. Your email address remains confidential and is not displayed to others.

GLS on Meetup: www.meetup.com/GLS-Gay-and-Lesbian-Sierrans

Next GLS Management Comm. Meeting

The next GLS management committee meeting is scheduled April 21 at 6:30 PM.

GLS management committee meetings are held about every two months, on weeknight evenings, by conference call. All GLS subscribers are welcome.

You may call one of the committee members to confirm meeting time, how to call in, or ask about the agenda, or for other information.

GLS Mission

The Gay & Lesbian Sierrans Section of the Angeles Chapter fosters the purposes of the Sierra Club by making available a wide range of events for gays, lesbians, and their friends. These activities include conservation, education, hikes, bike rides, beach walks, car camps, boat trips, social gatherings and fundraising.

GLS Newsletter

The GLS newsletter, TRACKS, is published six times a year. Annual subscriptions are \$15 for issues sent by US mail, \$10 for issues sent in PDF format by email, \$25 for both. Three year subscriptions are, respectively, \$35, \$20, and \$55. Send subscription requests and related membership correspondence to: GLS, P.O. Box 1300, South Pasadena CA, 91031-1300.

Mgmt. Comm. 2015

Marie Ammerman,
Chair

Tim Vo,
Co-Chair

**Kyla Hjertstedt and
Tammie Barta**,
Secretary

SK Chiou,
Treasurer

Dawn Wilson,
Member at Large

Other GLS Volunteers

Membership,
Jeff Cuevas

Conservation,
Tom Molloy

Webmaster,
Alan Schimpff

TRACKS Editor,
Jeff Johnson

.....
**Our outing volunteers
are listed on page 11.**



Hiking on the Canyon View Trail on the way from Eureka Peak to Black Rock Campground. Photo Jeff Johnson

Joshua Tree Weekend

(Continued from page 1)

miles to a trailhead near Eureka Peak.

Several more of us didn't feel like driving anywhere, so we took a trail that started right in our campground.... which was where the first group would eventually end up. The plan was for the two groups to meet about halfway and hike back to the campground together.

I happened to be in the second group. Long story short, we were darn lucky to have two different maps to consult, and a good sense of direction, because it's easy to take wrong turns along the many intersecting trails. Fortunately, all roads lead to Rome out there. It's just that a wrong turn can add time and distance at a time when you might be tired and thirsty. A couple times, we had to have a scout peel off and investigate an intersecting trail, just to make sure we weren't getting lost.

One thing that amazed us is that there's a small herd of deer that lives in the scrub-covered hills we were wandering though. That may explain why we heard a *lot* of yodeling by the coyotes at night – it sounded like they found something really... yummy.

Anyway, the two groups never did meet

up -- because they were going at different speeds -- but somehow we all strolled back into the campground just in time for the Traditional GLS Potluck. Funny how that works! And, do I have to tell you? The food was fabulous... you shoulda been there! Thick juicy burgers

with all the trimmings, scrumptious pizza made on the campfire (I didn't know that was even possible, did you?), mouth-watering barbecued ribs, cooked-to-a-turn salmon, and all sorts of other tasty dishes.

And the desserts... mmmm, so superb we just couldn't pass them up even though everyone was already stuffed.

Sunday we again split into two groups... one went to Mission Creek Preserve. I was in the group that went to Whitewater Preserve. We didn't know what a treat we were in for! Even though we were in the desert, the hills surrounding us were thickly carpeted with green ground-cover. The craggy ridgelines formed scenic vistas all around. And, there's a creek with a *lot* of water flowing through the preserve... more water than I've seen in any creek since the drought began.

Alas, I had to return home from there and so I missed the Sunday Night Campfire. I'll have to catch up at the next GLS outing... on all the good jokes and tall tales I missed.



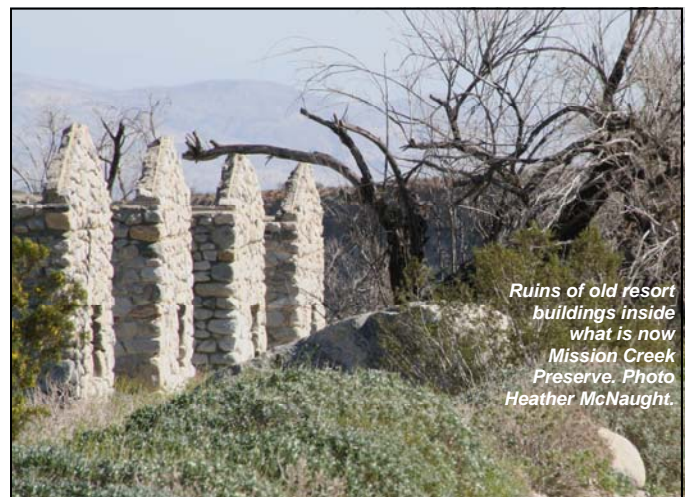
Where the Pacific Crest Trail crosses the Whitewater River in Whitewater Preserve. Photo Jeff Johnson.



Rest stop in Whitewater Preserve, looking toward the San Jacinto mountains. Photo Jeff Johnson



Hikers at the entrance to Mission Creek Preserve. Photo Heather McNaught.



Ruins of old resort buildings inside what is now Mission Creek Preserve. Photo Heather McNaught.



Gina's Provisional

by Nancy Beverly, story and photos

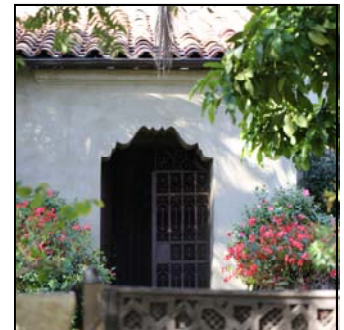
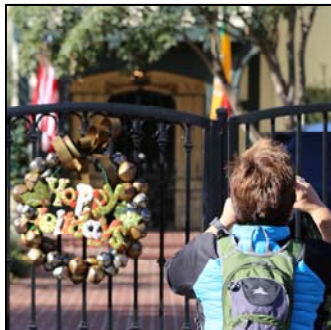
We had glorious SoCal sunshine January 17 (while the rest of the country shoveled themselves silly with snowstorms) as hikers came out in droves to support Gina Masesquesmay's provisional hike, 24 of us total. We started at the Sandstone Peak Trailhead and angled on to the Mishe Mokwa Trail, with lunch and lots of group photos up at Tri-Peaks. After our break, we hit the Backbone Trail and then scrambled up to Sandstone herownself. The only bobble of the day was at the beginning – Gina learned an important lesson about focusing – she missed the turn-off driving to the hike. We zipped back to the correct road and a handful of us dove in to help get signatures on the sign-in sheets completely quickly. We got underway only a few minutes late and then – ta da – we completed the hike and got back to our cars at the time Gina had estimated, whoo hoo! It's a lot of work corraling that many people and making

sure everyone is safe, happy, and not lost. Gina was up to the task – welcome to the leadership ranks!



Walking in L.A.

On January 4, Barb took us for a walking tour around town, starting in Larchmont Village, through Hancock Park and Windsor Square, passing many celebrity domiciles and architectural details. Here are a few pictures from that walk.



Crystal Cove

by Jennifer Dooley

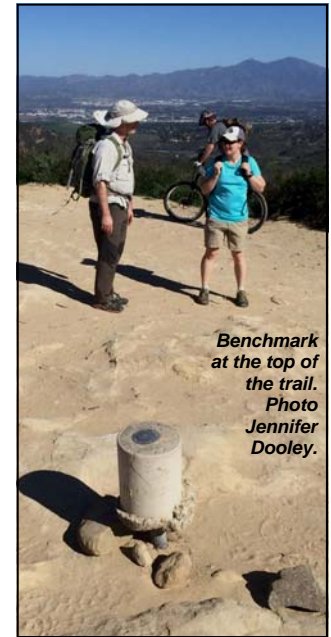
On January 24th, GLS visited Crystal Cove State Park to enjoy clear skies, ocean views, and uncharacteristically green hillsides! The temperatures were up, and the Santa Ana winds were blowing as we did our 9+ mile / 1,700-1,800 feet of gain hike. The backcountry of Crystal Cove boasts 2,400 undeveloped acres that are set aside for hiking, biking, equestrian use, and camping. It is common to see wildlife as well, including bobcats, roadrunners, deer, rattlesnakes, and red-tail hawks.

In the morning, four of us met at the Long Beach rideshare and chatted a bit before we all piled into Anna's car and pointed southbound. Continuing our yammering, we finally made it to the ranger station at Crystal Cove State Park, where we would begin the hike. At the ranger station, we met up with Erika, who was a newbie to GLS. Welcome, Erika... we hope to see you on many more hikes!

Setting out from the ranger station, we tackled the dreaded BFI trail about a half-mile into our hike. For those of you wondering what BFI stands for, it is an acronym, something along the lines of "Big Freaking Incline". This acronym is a very appropriate descriptor of that section of trail as anyone who has tried to breathe while ascending it can tell you. Most of us had to pare back the conversation a bit as we caught our breath! Once we arrived at



Rest stop at the Upper Moro campground, a walk-in campground with ocean view in the heart of Orange County. Photo Jeff Johnson.



Benchmark at the top of the trail. Photo Jennifer Dooley.

the junction of BFI and Moro Ridge Trail, we were rewarded with one of Crystal Cove's stunning ocean views! We enjoyed a brisk, gently uphill walk up Moro Ridge until we arrived at Upper Moro Campground. It was here that we decided to take our lunch break a little early and were treated to Jeff's amazing almond. Some of us kept going back to the brittle bucket and skipped the lunch that we brought...whoops!

Leaving the campground, we began the part of the park that was quite popular with mountain bikers, especially on such a beautiful day. The bikers were out in full

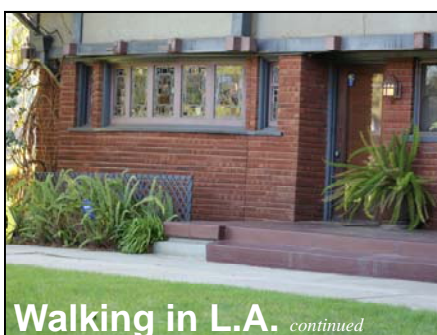
force as we worked our way through Crystal Cove's backcountry along Missing Link, Fence Line, Red Tail Ridge, and Rattlesnake Trails. We popped out onto West Cut Across Road and worked our way up to No Name Ridge for some more fantastic views of the lush green hillsides. After heading down No Name, we continued to No Dogs, which ultimately lead us back to the ranger station and Anna's Prius. Some of us were so beat, that we slept most of the way back to Long Beach, but I'm not naming any names! As it turned out, even generally cool Laguna Beach hit 82 degrees that day, tying the



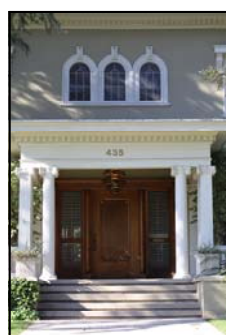
The green hills of Crystal Cove State Park in January. Santa Catalina Island in the distance. Photo Jeff Johnson.

previously recorded high temperature set in 1968. No wonder we were tired!

This is truly one of the great hikes in Orange County. For anyone that generally doesn't leave L.A., make it a point to visit the backcountry of Crystal Cove State Park; the views alone are worth the trek!



Walking in L.A. continued





Carol's (Non-Provisional) Hike in Topanga St. Park to Skull Rock

Approaching Skull Rock, left, on Temescal Ridge, and its topknotted companion on the right.

By Jeff Johnson, story and pictures

On February 1, a big group of GLS hikers showed up on a beautiful clear winter morning at the Temescal Canyon trailhead to join Carol for her provisional leadership hike. But as it turned out, her official Sierra Club leader status had just arrived in the mail the day before—a previous hike had qualified as her provisional hike. *Congratulations to Carol!* And off we go!

The hills were green with the first plants leafing out, and blooming with the first flowers. On a day like this it's hard to resist calling friends in the frozen north to tell them all about the view over the Pacific Ocean from the hilltops and the movie stars we may have seen on the trail. No need to mention the earthquakes or the traffic.

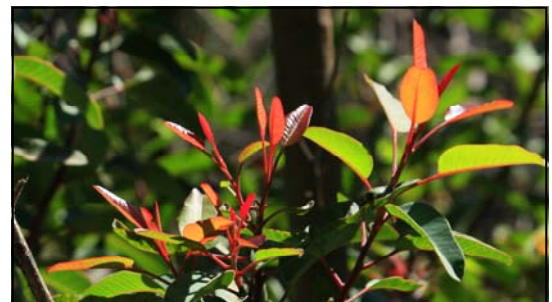
Our destination was Skull Rock. We climbed around the rocks there for a while, had a snack, then headed back. A very pleasant hike.

Thank you, Carol!

Do you recognize these native plants seen on this hike?



Gathering for a photo below the rock next to Skull Rock.



The green hills of Topanga State Park, with Santa Monica beneath the marine layer, and the Palos Verdes Peninsula beyond.



Outings & Events

March

March 1, Sunday

O: Josephine Peak (5558') Josephine Saddle (4720')

Dora Olea, Grace Hengst

Does Josephine have a Peak? Siii. And a Pass? Siiii. Come and hike both earthly features in an easy moderate pace with 2100' gain and 1900' loss in about 8 mi rt loop. We will hike Colby Cyn and an abandoned road to summit her saddle and her peak, and have lunch at the top. Even though the peak is not too high, it offers a 360 degree view of the Angeles Forest. Bring National Forest Adventure Pass for parking if you have one. Dogs carry their own water. Bring 10 essentials, 2 liters water (more if it's hot out), lug soles, hiking poles (optional), sunscreen, sunglasses, hat, snacks and lunch. Hike will take 4-5 ½ hours. Dress in layers. Meet at 8:50am. We will take off at 9:00 am sharp in carpools to the trailhead. Directions: Take the 210 Freeway to Angeles Crest Hwy (SR 2), exit freeway and head north (toward mountains). Just north of the freeway is a median on the right, which begins at Milmada Drive (one side of the median is Angeles Crest Highway, the other side is Flanders Road). Park on either side of the median near the junction with Wiladonda Drive, which is the 2nd street north of Milmada. Questions? Contact Dora at chamacasister@gmail.com.

March 7, Saturday

O: Whitewater Preserve

Mike Brostoff, Grace Hengst

Just North of Cabazon is the Whitewater Preserve. Whitewater Preserve is 2,851 acres surrounded by the Bureau of Land Management's San Gorgonio Wilderness, and includes the year-round Whitewater River. We will be hiking 12 miles (6 miles each way) on the Pacific Crest Trail starting at the Park's headquarters. After hiking along the river and crossing it twice, we will cross one ridge and head over to second horseshoe-shaped ridge. From the center of the second ridge, we will climb to the top and walk around the horseshoe, appreciating panoramic views of San Jacinto and San Gorgonio. Bring water, sun protection, layers especially if it is cold, lunch, 10 essentials. Hike starts at 9:30 AM. If raining, the hike is canceled. If the river is too dangerous to cross, we will find an alternate hike. For more information and to RSVP, contact Mike Brostoff, mbros4162@yahoo.com or (818) 399-4035.

March 14, Saturday

O: Descanso Garden

Barbara Edwards, Grace Hengst

Come celebrate Barb and Grace's birthdays at Descanso Gardens, <http://www.descansogardens.org/>. It is a 160 acre preserve of woodlands, chaparral and fabulous gardens, located at 1418 Descanso Drive, La Cañada Flintridge, 91011, near the intersection of the 210 and 2 freeways. Entrance fees are: Adults \$9, Seniors/

Students \$6. Parking is free. Meet at the entrance at 9 am. We will enter as a group, stroll gingerly through the lilac garden, rosarium and Japanese gardens. Then, break for lunch around 11 a.m. at the picnic area near the parking lot. Bring your own or purchase a gourmet sandwich at the café. We will have birthday cake for dessert. After lunch we will visit the Boddy Mansion, California gardens and camellia forests. Blooming in March will be camellias, irises, fragrant lilacs, cherry trees, daffodils and possibly tulips. As a special bonus, they are having a camellia show. Our entire stroll will be approx 3 miles, 200 ft gain. Children welcome. RSVP to leader if possible, in case of any last minute changes: greyhound@sbcglobal.net. Major rain cancels.

Mar 21 - Mar 22, Sat - Sun

O: Backpack: CHRT, Joshua Tree

National Park (2nd half)

Dora Olea, Jeff Johnson

Backpacking at Joshua Tree on the California Riding and Hiking Trail is our next adventure. This time we will hike the second half of this extraordinary trail covering about 20 miles in two days. It is a beautiful experience that you cannot miss. We will look out for the oldest Joshua tree, hoping to see it alive, or its remains. On Saturday, we will pack in about 9 miles and set up the camp in the middle of nowhere. On Sunday, we will hike out around 11 miles. This trip requires backpacking experience and involves a car shuttle.

(Continued next page)

Weekly Griffith Park Conditioning Hikes

What: Every Wednesday night, join us for a moderate (strenuous if you are out of shape) hike to Mt. Hollywood, 6 miles, 1145' gain/loss. This is a great mid-week workout. Lug-soled boots are best for traction, but some hikers wear sneakers. Bring a quart of water, snacks if you like, and a flashlight if not used to hiking in the dark. We have a few tiny breaks on the way up, stop at the top, gawk at the city lights until we get a chill, and then

return to our cars by approx. 9:30 p.m. Dogs are welcome; bring a leash and extra water. Rain cancels.

When: Every Wednesday, (except holidays) 7 p.m. sharp, end by 9:30 p.m.

Where: The Crystal Springs Griffith Park HQ/Visitors Center/Ranger Station, 4730 Crystal Springs Drive, LA. (Note: Mapquest, Google Maps, etc. may be misleading.)

Directions:

(1) From Los Feliz Blvd. (which

you can reach from I-5 or coming from Hollywood), turn north on Crystal Springs Dr. Proceed 0.5 mi. to the 3-way stop sign, go straight, and proceed 0.6 mi. and turn right in the driveway just after the Ranger Station. Drive around behind the Ranger Station to Park. Then meet us in the courtyard in the center of the buildings (picnic tables, soda machine, big tree). (2) From Fwy. 134 East, exit Victory, turn right at bottom of ramp. Make immediate left onto Zoo Drive. Drive through

the park, passing the zoo on your right and the Gene Autry Museum on your left. Curve around and pass the golf course. You'll come to a stop sign at Griffith Park Drive & Crystal Springs Road (which is the road you're on now, it changes names). Proceed one more block to the next stop sign at the Ranger Station and turn left. Drive all the way around behind the Ranger Station to park. Then meet us in the courtyard in the center of the buildings (picnic tables, soda machine, big tree).

Signal Hill Conditioning Walks

What: Up, over and around Signal Hill. 3-4 miles, 500-750 ft. gain/loss. Easy if you are in good shape, moderate and

maybe even strenuous if you are out of shape. Walking on pavement and gravel. Sensible walking shoes,

water, layers for cool evening breezes. Drizzle goes, rain cancels. Questions? Call Jeff 562-434-8473.

When: Every *last* Wednesday of the month (except

holidays), at 7:00 pm. Back at the cars around 8:30 pm.

Where: Meet on Industry, just west of intersection with Redondo, in Signal Hill. Plenty of street parking.

Outings and Events

Optional Mexican Feast on Sunday. Space is limited, RSVP by Feb. 28th, 2015. For more info and RSVP contact Dora at chamacasister@gmail.com.

March 29, Sunday

O: O'Melveny Park to Mission Point Dora Olea, Jeff Johnson

The second-largest park in L.A. County, second only to the expanses of Griffith Park on the opposite site of the Valley, offers the best view of the San Fernando Valley. We will take a stroll along citrus groves, grassy fields, and a riparian canyon in this tranquil park situated in Granada Hills. The first 0.9 mile explores the initial section of the well-maintained lawns shaded by oaks and eucalyptus trees extended over a quarter-mile into Bee Canyon Trail. For a better view of the Valley and a good workout we will hike up the challenging Mission Point Trail that climbs over 1,000 ft in 1.5 miles. A moderate pace hike with approx. 4 miles round trip. 1,400 ft. elev. gain/loss. Short car shuttle. Bathrooms and water at the trailhead. K-9 welcome. Bring water, lug soles, sunscreen, and your lunch. Meet 9 am. From CA 118, exit at Balboa Blvd. and head north 2.3 miles to Sesnon Blvd. Make a left on Sesnon, following it for just over 0.5 miles to the entrance of O'Melveny Park on the right. Free parking, carpooling is recommended. Questions? Contact Dora at chamacasister@gmail.com.

April

April 5, Sunday

O: Bolsa Chica Preserve Barbara Edwards, S.K. Chiou

Join us for some Easter Sunday fun! The Bolsa Chica is one of the Sierra Club's success stories in helping to protect Southern California's vanishing coastal wetlands from pressures of real estate development. The Reserve is a rare ecosystem where salt water from the ocean and freshwater from the land meet and mix, forming an unusually rich diversity of habitats, including freshwater wetlands, coastal bluff scrub, grasslands, and a eucalyptus stand that provides critical nesting habitat for raptors and herons. Expect to see any of the 321 species of migratory and permanent resident birds that have been sighted here in the past decade. We will walk approximately 5 miles, zero elev. gain/loss. Bring 2 quarts of water, snack or lunch, binoculars, comfortable

walking shoes, sunscreen, hat and windbreaker/light jacket. Dogs are not allowed. Rain cancels. Meet at 9 AM in front of the Interpretive Center, 3842 Warner Ave., Huntington Beach. From the 405 or 22 Freeways, take the Bolsa Chica Rd exit south to Warner Ave. Turn right on Warner Ave., and then left into parking lot before PCH. Questions? Contact Barbara at greyhound@sbcglobal.net.

April 11, Saturday

O: Short Cut Canyon to West Fork to Red Box Susan Campo, Kyla Hjertstedt

This is a local hike through a lovely canyon, past occasional streams. It required a car shuttle to complete. The hike is moderate and involves a loss of 1700 feet of elevation in 3.5 miles which must be regained in the second and longer section of the hike. TOTAL 9.8 miles. Bring lunch, water, wear good boots for ankle support, poles if desired; wear appropriate clothes for mountain weather. Meet at La Canada car pool point at 8:30 am, but first PLEASE RSVP your reservation to leader at least 24 hours prior to hike. Note if you are willing to drive, don't forget your parking Adventure Pass. Hiking DOGS with leash and extra water will be allowed. Question? Contact Susan at susanlucillecampo@yahoo.com.

April 19, Sunday

O: Liberty Canyon / Malibu Creek State Park loop Nancy Beverly, Gina Masequesmay

Join us on one of Nancy B.'s fav hikes! We start out at Liberty Canyon and head up and up through an enchanted forest of greenery until we have spectacular views of the Santa Monica Mountains. Our loop takes us over to Malibu Creek State Park and then back through open fields of grass and ancient oak trees – 7.3 miles total, 1600' gain. This is a moderate to strenuous hike, and the first two miles alone gain 900' with a 7.7% grade. The hike should take us about four hours, depending on the number of participants and times we stop to shoot photos. Bring: layers, lugsole boots, hiking poles (if you use them), 3 liters of water, snacks, lunch, sunscreen, a hat. Sorry, no dogs allowed in the state park – you could do the first few miles and head back on your own with your dog, if you like. Directions: Take the 101 and exit Liberty Canyon. Head south towards the Santa Monica Mts., just over a half mile. Park on Liberty Canyon Rd. before the green fencing and the wrought iron gate at the

end (don't park in the subdivision where the road curves to the left). Meet 9 a.m.; rain cancels; please note, there are no restrooms at the trailhead and won't be for the first two hours until we get to the State Park J. Questions: nancybeverly@sbcglobal.net or 818-681-5192.

April 26, Sunday

O: Lower Monroe Truck Trail Jan McInnis, Nancy Beverly

It's time to hike Glendora! Yes, there is actually hiking out east and I've found it! It says truck trail but you can't drive trucks on it...at least not any longer because it's pretty much only wide enough to hike. So come on out for this moderate hike that will burn enough calories to let you have a big dinner, but won't take up your whole day. The first mile is pretty flat with about 5 or 6 places where you have to step over water (using rocks), and then the trail starts to climb. The whole trail is about 8 miles one-way, but we're only going up about 3. We'll go up to the Punkout Point sign, touch it, and then back-track ½ mile to the Mystic Canyon trail sign where there's room to snack. This will give us a total of 6 miles RT with approximately 700 feet of elevation gain. There are mountain bikers along the way too, so I would encourage you not to bring dogs. There is also some shade but may not be much in April. Oh, and big note, there are no bathrooms on the trail or at the trailhead. Directions: From the I-210 Freeway, exit Grand Avenue in Glendora. Go north on Grand 1.7 miles to Sierra Madre Blvd. and turn right (east). Drive 2.0 miles to Glendora Mountain Road (GMR) and turn left (there is no stop sign or light, so if you cross the wash and dead-end at Valley Center, you've gone a block too far). Go 1.3 miles to the Angeles National Forest sign and park on the road up to the sign, or past it if you have an Angeles National Forest pass. Meet at the trail head just past the Angeles National Forest sign at 8 a.m. We should be back by 11 a.m. There is a decent amount of parking, but get there early as it does fill up. Carpools are encouraged, and you can also do stack parking if you find a buddy to stack with. Things to bring – 2 liters of water, snack and sunscreen. Also, lug soles are highly recommended. Oh, and I understand there's a chocolate chip cookie tree at our snacking point – you don't want to miss that! Rain cancels. Contact me with questions: Jan.McInnis@gmail.com or 213.709.3816

Outings and Events

Future Outings

May 2, 2015, Saturday

O: Mount Waterman

Gail Wise, Nancy Beverly

Come hike under the pines and cedars and enjoy gorgeous views along a ridge as we hike up to Mt. Waterman and back. At 5-6 miles roundtrip, with 1300' gain/loss, this is a moderate hike (but can seem taxing if you're out of shape, as Mt. Waterman is over 8000'). Bring layers, snacks and water. Well-mannered dogs are welcome but **MUST** be on leash at all times. Meet at the La Canada rideshare point at 9 a.m. Questions? Contact Gail at 310-433-2298 or gailwise2@gmail.com.

May 9, Saturday

O: Red Box to Strawberry Potrero and return via Colby Canyon

Susan Campo, Diane Zaepfel

This is an all day local hike. 10 mile loop, dependent on a car shuttle return. Moderate 1500 foot gain and loss. We will take our time and enjoy the scenery! Bring lunch, boots, 2 liters of water, poles if you use them. Meet at 8:30 am at the La Canada car pool point. Don't forget your parking Adventure Pass. Please RSVP at least 24 hours before the trip and tell leader if you are willing to drive in a short car shuttle. Hiking **DOGS** with leash and extra water will be allowed. Questions? Contact Susan at susanlucillecampo@yahoo.com.

May 17, Sunday

O: Las Virgenes Cyn Figure-8 Loop Hike
Dora Olea, Amanda Smith

The canyon is an Open Space Preserve area as an unspoiled landscape in the Simi Hills that straddles the Los Angeles-Ventura county line. The canyon was the domain of the Native American Chumash people, later it was used as filming high-profile movies including *Gone with the Wind*, *Duel in the Sun*, *They Died With Their Boots On*, as well as dozens of TV shows and commercials. In 2004, the Santa Monica Mountains Conservancy made the land an open space preserve, open to the public, and protecting several endangered or sensitive species of plant and animals such as the red-legged frog. The bucolic pastoral open space contains nine miles of seasonal streams that form the headwaters of Malibu Creek. Chaparral-dotted hills encompass live oak, cottonwoods, sycamores and walnut trees. The area is an important wildlife corridor connecting the Santa Susana Mountains with the Santa Monica Mountains. We will follow a creek bed through gorgeous oak woodland, then gently winds through rolling grasslands with

distant views. En route, the trail crosses a saddle and drops into a lush, forested canyon. The trail then connects with the adjacent loop to the eastern canyon encircled by Laskey Mesa and a broad plateau. A moderate pace hike with approx. 7 miles round trip. About 776' ft. elev. gain/loss. K-9 welcome. Wear layers, bring water, lug soles, sunscreen, and a potluck lunch item to share. Meet 9 am along the curb. From Ventura Freeway/highway 101 in Calabasas, exit on Las Virgenes Rd. Drive 1.5 miles north to the posted trailhead at the end of the road. Park along the curb. Heavy rain cancels. Questions? Contact Dora at chamacasister@gmail.com.

May 23, Saturday

The Getty Museum

Nancy Beverly, Jeff Johnson

Join us on another of Jeff and Nancy's periodic trips to the Getty for an art mash-up like no other. This time it's to look at Light, Paper, Process: Reinventing Photography; Molten Color: Glassmaking in Antiquity; and the paintings of J.M.W. Turner (sixty key oil paintings and watercolors, this exhibition is "the first to focus on the unfettered creativity of Turner's final years"). The museum opens @ 10 a.m. Be parking your car at that moment and getting on the shuttle up the hill so we can meet at the top of the steps before the museum entrance at 10:15 to beat the crowds. Location: 1200 N. Sepulveda, L.A. Entrance is free, parking is \$15. Bring water, snacks, lunch money if you like and your camera for the outdoor views and flowers. Contact Jeff (jgj@cheerful.com) or Nancy (nancybeverly@sbcglobal.net) about carpooling from either Long Beach or the Valley.

Jun 5 - Jun 7, Fri - Sun

O: Marion Mountain carcamp, San Jacinto day hike

Dora Olea, Grace Hengst, Teresa Nick

Save the date, details in future TRACKS.

June 13, Saturday

O: Mt. Baldy (10064')

Dora Olea, Kirk Olsen

Yes, we are hiking up Mt. Baldy!! We will hike at a moderate pace, 8.5 mi. rt., 3900' gain/lost. We will go from Manker Flat trailhead to summit via the Sierra Club Ski Hut and return via the Backbone Trail to Baldy Notch and the fire road under the ski lift. Optional descent from Baldy Notch uses the ski lift (\$15). If you are hiking Kearsarge Pass with us on June 19, please consider to enjoy this hike for acclimation purposes. Meet 7:20 am at Manker Flats TH to start the hike promptly at 7:30 am. Bring 10 essentials, 3 qts. water (more if it's hot out), lunch, snacks, lugsoles, sunscreen, hiking poles. USFS Adventure Pass required (parking). Bathrooms are at the trailhead. Directions: 210 E. exit on Baseline Rd. Turn left, next

light turn right on Padua Av., right onto Mt. Baldy Rd. Go past Mt. Baldy Village 2 mi. and stay on Mt. Baldy Rd. as it curves left at Icehouse Cyn. Rd. Continue driving 2 mi. to Manker Flat trailhead on your left-hand-side. Questions? Contact Dora at chamacasister@gmail.com.

Jun 19 - Jun 21, Fri - Sun

O: Kearsarge Pass (11,660') Onion Valley carcamp

Dora Olea, Heather Sargeant

Save the date, details in future TRACKS.

Jun 28 - Jul 4, Sun - Sat

O: New Mexico: North of Taos

Mike Brostoff, Grace Hengst

Spend a week in Northern New Mexico at Takoja Retreats. Nestled on 40 acres, 28 miles north of Taos, the Takoja Retreat Center is surrounded by tall mountains and wide expanses of sage and cedar. There are many activities to suit everyone from exploring unlimited hiking trails and mountains, (including Wheeler Peak, the highest mountain in New Mexico standing at over 13,000 feet) to Taos with its pueblo and diverse artist scene. The mountains offer much more wildlife viewing than we are accustomed to in California. Bighorn sheep, black bears, and marmots are common, with an occasional mountain lion or porcupine sighting for the off trail adventurer, and don't forget, the coyotes will sing you to sleep every star-filled night. There will be a few group activities, but most of the week is left free to spend the time as you wish. You have your option of camping on the property or staying in the two Adobe domes complete with kitchen, bathrooms, showers. They've added authentic New Mexico cuisine to complement the full buffet breakfasts served every day. In addition, there are three complete evening dinners and one supper of gourmet leftovers. Price for the trip varies depending on the accommodations you choose:

- Dome: Two person loft with private bathroom, \$410 (per person)
- Dome: Communal sleeping area: \$375
- Camping: \$325.

Since the acoustics of the domes can generate a lot of noise, we encourage people to camp. Campers will have access to the bathrooms and showers. Please send check payable to GLS, phone number, address and email address to Mike Brostoff 11220 Moorpark #110 North Hollywood, 91602. If interested in the loft, please contact Mike first to check for availability. The trip is open as we publish.

Jul 11 - Jul 12, Sat - Sun

O: Backpack to Twin Peaks: Eastern Twin (7761'), Western Peak (7596')

Dora Olea, Grace Hengst

Save the date, details in future TRACKS.

March and April 2015

Sunday	Monday	Tuesday	Wednesday	Thursday	Friday	Saturday
MAR 1 Josephine Peak Dora, Grace	2	3	4 Griffith Park Gail, Nancy	5 full moon 	6	7 Whitewater Preserve Mike, Grace
8	9	10	11 Griffith Park Nancy, Dora	12	13	14 Descanso Garden Barb, Grace
15	16	17	18 Griffith Park Anne, Mike	19	20	21 Joshua Tree CHRT Dora, Jeff J. <i>Through Sunday</i>
22 <i>End Joshua Tree</i>	23	24	25 Griffith Park Dora, Anne Signal Hill	26	27	28
29 O'Melveny Park Dora, Jeff J.	30	31	APR 1 Griffith Park Anne, Gail	2	3	4 full moon 
5 Bolsa Chica Preserve Barb, SK	6	7	8 Griffith Park Nancy, Dora	9	10	11 Shortcut Cyn to West Fork to Red Box Susan, Kyla
12	13	14	15 Griffith Park Nancy, Mike	16	17	18
19 Liberty Cyn, Malibu Creek State Park Nancy, Gina	20	21	22 Griffith Park Anne, Dora	23	24	25
26 Lower Monroe Truck Trail Jan McInnis, Nancy	27	28	29 Griffith Park Dora, Anne Signal Hill	30	MAY 1	2 Mount Waterman Gail, Nancy

GLS Leader Contact Information

Please call after 9 AM and before 9 PM

Alan Schimpff	310-589-9125	alanschimpff@netscape.net
Amanda Smith	323-646-0771	amandajillsmith@gmail.com
Anna Baum	310-990-0610	ambaum@dslextreme.com
Anne Mullins	323-522-6640	hike2thepeak@gmail.com
Asher Waxman	323-876-2889	amuirman@yahoo.com
Barbara Edwards	310-839-0593	greyhound@sbcglobal.net
Beth Epstein	562-439-0646	b.epstein@verizon.net
Carol Jeffcoate	562-985-1007	
Dawn Wilson	612-384-0180	dawnxwilson@gmail.com
Diane Ru	626-688-8642	zappydz@gmail.com
Dora Olea	213-200-0239	chamacasister@gmail.com
Gail Wise	310-433-2298	gailwise2@gmail.com
Grace Hengst	323-697-6886	gracehikes@roadrunner.com
Heather Sargeant	909-336-2836	heathercsoo@aol.com
Jeff Cuevas	626-644-9879	cuevas777999@yahoo.com
Jeff Johnson	562-434-8473	jgj@cheerful.com
Jim Angus	323-895-0001	jim@jimangus.com
Judith Demarah	818-451-8403	
Karen Lovett	562-438-3418	klovett2000@hotmail.com
Kirk Olsen	562-434-8675	kso@kirkolsen.com
Laura Rainey	562-438-3418	geowmn@verizon.net

Marie Ammerman	818-406-3529	ammermanm@yahoo.com
Mary Conte	213-810-3939	maconte@hotmail.com
Mike Brostoff	818-399-4035	mbros4162@yahoo.com
Nancy Beverly	818-681-5192	nancybeverly@sbcglobal.net
S. K. Chiou	714-554-9513	skchiou@yahoo.com
Susan Campo	626-688-8642	susanlucillecampo@yahoo.com
Teresa Nick	612-384-0421	teresa.nick@me.com
Tom Molloy	310-589-9125	tomsmolloy@yahoo.com

Outings Volunteers

Mike Brostoff, Outings Schedule

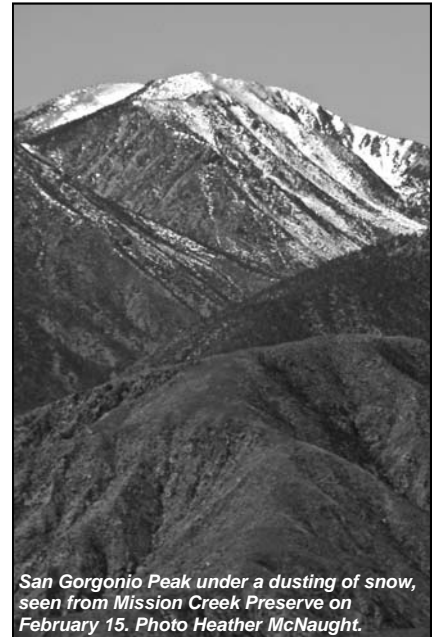
Contact Mike about scheduling outings, to check for available dates, and to submit write-ups.

Dawn Wilson, Outings Liaison to Angeles Chapter

Contact Dawn about questions of leadership requirements and Sierra Club Outings Policy. Dawn is the primary person to read the communications from the Angeles Chapter regarding outings and inform the other leaders.

Laura Rainey, Weekly Reminder

Laura sends out the weekly email announcing upcoming events. If an event must be altered or canceled after publication, e-mail Laura and cc Mike.



San Geronio Peak under a dusting of snow, seen from Mission Creek Preserve on February 15. Photo Heather McNaught.

Important Outing Information

Waiver

To participate in a Sierra Club outing, you must sign a liability waiver. If you would like to read a copy of the waiver before the outing, go to: <http://www.sierraclub.org/outings/chapter/forms/>, or call 415-977-5630.

Rating Codes

These codes indicate the technical difficulty, not the strenuousness.

O Applies to uncomplicated outings such as hikes on trails or the equivalent (with minimal navigation skills).

I Includes outings that involve cross-country travel where navigation is necessary. Rougher ground than "O" outings may be traversed, and use of hands for balance may be necessary. Climbing level: 2nd class terrain.

C Events under external

control of a non-Sierra Club entity, (i.e. ranger, guide, concessionaire).

Outing Reservations

Reservation fees of from \$5-\$15 are refunded only when you show up and if they aren't needed to offset costs.

Cancellation policy on more expensive trips is as follows: Cancellation within 30 days, no refund without replacement. If your spot is filled, 90% will be refunded. This policy is in effect unless the leader states otherwise in writing. Always send two SASEs, contact and drive/carpool information. Make checks payable to "GLS".

Dogs

For most people, the presence of a well-behaved dog can be entertaining, or at worst a mild annoyance. However, this is not true for everyone. Some people suffer from various

levels of fear of dogs. Because of this, and the potential intrusion on wildlife, the Sierra Club policy is that dogs are not allowed on Club outings unless the write-up states DOGS OK. Make sure you bring adequate food, water, a bowl, and a long leash.

Seller of Travel Notice

CST 2087766-40. Registration as a seller of travel does not constitute approval by the State of California.

Adventure Pass

National Forests in Southern California (Los Padres, San Gabriel, San Bernardino, and Cleveland) require parked cars to display an Adventure Pass. The pass is available from ranger stations, sporting goods stores, and other local merchants and costs \$5 per day or \$30 per year. Plan on getting it before your outing, as most outlets do not open early. Many Sierra Club members dispute this user fee and

protest it by not buying a pass, possibly incurring a ticket. The choice is yours.

Carpooling

To facilitate the travel logistics for outings, participants often make carpooling arrangements. The Sierra Club does not have insurance for carpooling arrangements and assumes no liability for them. Carpooling, ride-sharing, or anything similar is strictly a private arrangement among participants. Participants assume the risks associated with this travel.

Rideshare Points

Directions to all rideshare points in the Angeles Chapter Schedule of Activities or at: http://angeles2.sierraclub.org/get_outdoors/know_you_go/rideshare_meeting_places

La Canada Rideshare Point

Exit 210 at Rte 2 / Angeles Crest Hwy. Go N (uphill) 1/4 mi on Rte 2, park at curb on right, on long uphill.

TRACKS

SIERRA CLUB/GLS
P.O. BOX 1300
SOUTH PASADENA, CA 91031-1300

TRACKS

Subscribe to TRACKS, the GLS newsletter, and find out about all the GLS outings and events every month. You do not need to be a Sierra Club member to subscribe.

Name: _____

Address: _____

City, State, Zip: _____

Email: _____

- New Renewal Gift Change of Address
- Send print TRACKS by US mail \$15 - 1 yr; \$35 - 3 yr
- Send email TRACKS (pdf file) \$10 - 1 yr; \$20 - 3 yr
- Send print and email TRACKS \$25 - 1 yr; \$55 - 3 yr

Fill in this form and send it with a check made out to GLS to:
GLS
P.O. Box 1300
South Pasadena, CA 91031-1300



Contributions, gifts and dues to the Sierra Club are not tax-deductible; they support our effective citizen-based advocacy and lobbying efforts. Of your dues, \$7.50 goes for a subscription to *Sierra* magazine, and \$1 for your chapter newsletter.

Name: _____

Address: _____

City, State, Zip _____

Category:	Individual	Joint	Mail to:
Introductory	\$25		Sierra Club Membership Dept. P.O. Box 52968 Boulder, CO 80322
Regular	\$39	\$47	
Supporting	\$75	\$100	
Contributing	\$150	\$175	
Life	\$1000	\$1250	
Senior	\$24	\$32	
Student	\$24	\$32	
Limited Income	\$24	\$32	

When you join the Sierra Club, please use this form. The FRIP no. on the form brings part of your membership dues to GLS

FRIP#
F94QW04721