

TRACKS



July/August 2011

Volume 24, No. 4

On the web: <http://angeles.sierraclub.org/gls/>



GLS at Red Rock

*At the Sultan's Turban.
Photo Nancy Beverly.*

GLS Info	2
Trip Reports	3 - 6
Outings & Events.....	7 - 9
Calendar	10
GLS Leader Contact Info	11
Important Outing Info.....	11

By Wendy T.

Only a couple hours' drive northeast of Los Angeles lies a perfect place to tickle the imagination. Red Rock Canyon State Park on Highway 14 is chock full of spectacularly colorful and whimsically-shaped rock formations. And there's a great campground nestled right up against some of the park's most scenic stuff.

So at the start of May, co-leaders Nancy B. and Marie A. and about 15 of us spent a long weekend exploring the desert playground.

This was a trip where every camper needed to make sure their tent was securely pegged to the ground. Otherwise, random high winds would have sent our little domiciles skittering across the desert like tumbleweeds. We also had to zip up our tent doors good and tight, to keep out clouds of dust from two brief but bothersome sandstorms.

But the inconveniences were well worth the trouble. Everywhere we looked were scenes that begged to be

(Continued on page 6)

Message from the Chair

I've noticed that I spend a lot of these Chair Chats thanking people – and y'know what? I'm gonna do it again. You can't thank people enough, especially in an all-volunteer (and very active!) organization like ours.

Thank you to everyone who helped set up, run and take-down our booth at Long Beach Gay Pride (S.K., Barb, Carol, Kirk, Jeff B., Jeff J., Mary, Darlene, Charles, Amanda, Laura and Karen). The booth looked fabulous and we collected lots of names to whom we have sent out the current edition of TRACKS.

Thanks to the new folks who have signed up to be regular subscribers – great to have you in the group, we hope you'll try

out as many outings as you're able and become long-time fans of GLS.

Thank you to leaders who organize big, complex outings and trips. I co-lead the campout to Red Rock Canyon State Park in April with Marie A. (even though I've led 100+ hikes, that was my first time heading a campout) – my goodness, I have newfound appreciation for those of you who have led the annual July 4th trip to the Sierra Nevadas and the many trips to Morro Bay and the Grand Canyon!

Finally, a special nod to my co-leaders on Wednesday nights at Griffith Park – we are small in number but mighty in spirit – thanks for keeping that tradition alive!

Nancy Beverly

GLS 25th Anniversary...

...that's next year! What would you like to do to celebrate? Let a management

committee member know.

As for Tracks, I hope to publish some personal GLS histories. For example, Mike Brostoff's long awaited declension of

Grace's family, favorite hiking dogs of GLS, whatever happened to [fill in the blank]?, Most Memorable Mishaps, etc. Any ideas? Let me know. *Jeff J.*

GLS Management Committee Meeting, May 3, 2011

On the conference call: Nancy Beverly, S.K. Chiou, Amanda Smith (Jeff Johnson joined mid-way through the call). Discussed:

Final details of Long Beach Pride. Nancy, S.K., and Barb E. are on the set-up team. S.K. is to pick up the banners etc. from Jeff, who will take care of the printing of mini-TRACKS for handouts. Jeff also is coordinating all of the volunteers' schedule times. S.K., as Treasurer, will make sure we have money on hand for reimbursing volunteers for their parking and entrance fees.

The Promo mailing. Both hardcopies and via email – to lapsed members and potential new members from Meet-Up

went well. Jeff C. has already received a few applications from those using the promo discount offer.

Thinning out of Leader list in Tracks. Jeff J. had thinned it out already but Nancy will contact those remaining to see if they still want to be listed.

Bank Accounts. Once again, Wells Fargo mentioned – this time to Nancy – that if we had an auto transfer into a savings account of \$100 we could save ourselves the bank fees with our checking accounts. This seems to cause more problems than its worth – we've been down this road before when Karen L. was Treasurer. Per S.K., the event account has approximately \$1800 in it now and the

regular checking has \$2-3000. Once the big trips have money coming in from participants, that money will replenish our bank accounts.

CPR updated guidelines. Nancy will make a pdf of the new Cardiopulmonary Resuscitation guidelines and send to all of the leaders.

Trail maintenance. Not happening this May, nor is the Leaders' meeting. Perhaps using the July 4th campout or the Christmas party as a time to generate new outings was discussed although no conclusion was reached.

Next Meeting: Wednesday, July 6, 2011, conference call from 7 to 9 p.m. *Nancy Beverly*

<h3>Information about GLS</h3> <p>General questions about GLS, call Grace at 323-227-6444 or Mike at 818 399-4035.</p> <p>Questions about a specific event, please call the leaders listed in the schedule. Contact info is inside the back page.</p> <p>Sign up for the FREE GLS email list, with a weekly email digest of GLS events, go to: <http://angeles.sierraclub.org/news/MailingLists.asp>. Your email address remains confidential and is not displayed to others.</p>		<h3>Next GLS Management Comm. Meeting</h3> <p>The next GLS management committee meeting is scheduled for Wednesday, July 6, at 7pm. Committee members will meet by conference call.</p> <p>GLS management committee meetings are (usually) held about every two months, on weeknight evenings, by conference call. All GLS subscribers are welcome.</p> <p>You may call one of the committee members to confirm meeting time, how to call in, or ask about the agenda, or for other information.</p>	
<h3>GLS Mission</h3> <p>The Gay & Lesbian Sierrans Section of the Angeles Chapter fosters the purposes of the Sierra Club by making available a wide range of events for gays, lesbians, and their friends. These activities include conservation, education, hikes, bike rides, beach walks, car camps, boat trips, social gatherings and fundraising.</p>	<h3>GLS Newsletter</h3> <p>The GLS newsletter, TRACKS, is published six times a year. Annual subscriptions are \$15 for issues sent by US mail, \$10 for issues sent in PDF format by email, \$25 for both. Three year subscriptions are, respectively, \$35, \$20, and \$55. Send subscription requests and related membership correspondence to: GLS, P.O. Box 1300, South Pasadena CA, 91031-1300.</p>	<h3>Mgmt. Committee</h3> <p>Nancy Beverly, Chair Amanda Smith Jeff Johnson Sharon Hartley SK Chiou, Treasurer</p>	<h3>Other GLS Volunteers</h3> <p>Membership, Jeff Cuevas Conservation, Tom Molloy Webmaster, Alan Schimpff TRACKS Editor, Jeff Johnson</p> <p>..... Our outing volunteers are listed on page 11.</p>

Santa Cruz Island Day Trip

By Wendy T.

One of the biggest and most popular GLS events is our annual trip to Santa Cruz Island. We've done it each spring, six years in a row. This year about 30 people hopped on the ferry at the Ventura Harbor for a day of adventure in another world.

At 22 miles long and 6 miles wide, Santa Cruz was once the largest privately owned island off the continental U.S. Today it is a wilderness preserve, part of Channel Islands National Park.

The hour-long channel crossing under lead-color skies was pretty smooth. Everyone whipped out their cameras and jostled for spots at the railings when a couple of migrating whales decided to frolic near our ferry, whipping their flukes in the air and spouting fine mist. It was a happy start to the fun day ahead.

We hoisted ourselves up the wooden ladder at the island's Scorpion Cove pier and organized ourselves into three hiking groups -- tigers, deer and turtles, depending on skill level and frame of mind. But first we learned a bit about the island's rich history from a Park Service naturalist.

The Chumash Indians lived on Santa Cruz for at least 9,000 years, and developed a trading network with mainland Native Americans. Along came European explorers in the 16th and 17th centuries, including Juan Cabrillo and Gaspar de Portola, who ushered in a flood of mainland settlements that led to the de-population of the island. The last of the Chumash left Santa Cruz in 1822. By the mid-



1800s, the island was transformed into an enormous commercial ranch with 24,000 sheep. Later, oilman Edward Stanton ran cattle there. After the death of his son in 1987, the island became the property of the Park Service and the Nature Conservancy, which returned much of the island to its wild state.

Bootleggers once thrived on Santa Cruz ... hence the name Smuggler's Cove for one of its most picturesque niches. And the military used it as a watch post for enemy planes and ships during World War II, with "spotters" assigned there... a quaint concept now.

(Continued next page)



Disappearing into the mist on one of the high ridges. Photo Tedd Wenrick.



One of the tiny indigenous island foxes, about the size of a house cat. Photo Tedd Wenrick.



Arriving at the pier at Scorpion landing. Photo Jeff Cuevas.



Walking toward the old ranch buildings near the Scorpion landing. Photo Jeff Cuevas.



On one of the high ridges near El Montanon. Photo Alan Schimpff.

Santa Cruz Island Day Hike

(Continued from previous page)



In the grasslands. Photo Tedd Wenrick.



The Scorpion landing area. Photo Jeff Cuevas

We scampered off on our chosen hikes. The heavy marine layer never stubbornly stuck to the ground, which at first was a bummer but then we made a game of threading our way through the mysterious shroud, never quite sure what was around the next bend or below the ridge.

With visibility limited, we didn't see much actual wildlife as we hiked the hills and ridges covered with grasses, light brush and occasional clumps of trees. The island is populated by a unique species called island foxes... dainty, quiet creatures that we DID actually see, meandering surprisingly close to our group. We thought we saw a golden eagle or two – they scour the island for food, including the foxes, which they've gobbled up to near extinction.

After a day of trekking, my group (the deer) decided to take a quick side trip uphill to some bluffs overlooking the Santa Barbara Channel. It was well worth the extra effort. The fog lifted just enough to give us awesome views of the plunging cliffs and deserted sandy beaches dotted with yawning caves.... you could just imagine the smugglers of yesteryear pulling into the isolated coves to stow their goods and grab some sleep.

Late afternoon and time to board the ferry for the return to the mainland. The sun finally decided to show its face and kept us all warm on the trip back, where most of the famished group regained all their burned-off calories with Greek food at a local restaurant.

Many thanks to GLS leader Mike B. for doing all the prep work to once again arrange our favorite jaunt across the water.



The tiger hikers. Photo Jeff Cuevas

Laguna Coast Wilderness Hike

There we are at our lunch spot on a hilltop high above Laguna Beach on June 11, after the first half of our more-rigorous-than-expected scenic hike. Some highlights of the fauna and flora seen that day:

- A. *Ctenucha multifaria*, an odd blue-bellied moth that fluttered all around.
- B. Bush mallow in glorious pink bloom
- C. *Antirrhinum nuttallianum* (snapdragon)
- D. Lemonade berries all around, in various stages of sliminess and sourness.
- E. *Calochortus weedii* var. *intermedius*, a mariposa lily said to be rare.



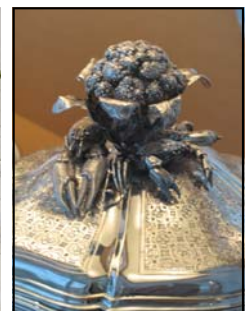
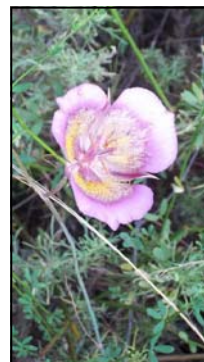
Photo Tedd Wenrick



Photos Marie Ammerman

Bailey Cyn., 6/18

Bailey Cyn. tour by docent Wendy Thermos, fun under the oaks, then a hike to Jones Peak. Calochortus in bloom.



Getty Museum, 6/4

A day at the museum with various gender-suggestive forms on view, Cambodian cultural events all day long, and lunch.



Photos Dora Olea

Red Rock

(Continued from page 1)

photographed. In fact, Red Rock has long been a favorite place for filming movies (“The Outlaw,” “The Mummy,” and “Jurassic Park,” to name a few) and music videos.

Towering, fluted formations in every color of the rainbow (fancy that) soon had us playing a game of “What does this look like?”

There were rocks and geologic sediment in the shape of giant mushrooms, castles and chess pieces. Some had official names – there was the Sultan’s Turban and The Camel (which actually has a remarkably detailed resemblance to the beast of burden).

For our big exploration hike, we did our best imitations of Lawrence of Arabia by putting on long sleeves, long pants and headgear of various types to hide from the sun. Even though it was the middle of spring, it was obvious that Red Rock would probably have been uncomfortably hot if we’d gone much later in the season.

Evenings were brightened by long happy hours and gab-fests around the campfire. Some damsel in distress forgot a corkscrew or needed to trim a hangnail or something, which brought the debut of the best toy of the weekend when Anna B. whipped out her Miss Army Knife.

We all went wild over this knock-off of the Swiss version, and begged Anna to tell us where we could get one too (alas, she couldn’t remember where it came from). It was day-glow pink, with an extra-large nail file, a compartment for stowing eye makeup, and the crowning touch – a hinged mirror. I believe it also had a flip-out lipstick tube.

Yes, a girl has to be ready for anything in the desert.



Evening light on the campground. Photo Wendy T.



Photo Nancy Beverly



Hiking around in the rocks. Photo Nancy Beverly



Dai and Anna in the window rock. Photo Nancy Beverly.



Miss Army

Photo Nancy Beverly.



Feet up in camp. Photo Nancy Beverly



Photo Nancy Beverly.



Visiting chukar partridge. Photo NB



Photo Nancy Beverly.

Outings & Events

July

Jul 1- Jul 5, Thu - Mon

O: July 4th Celebration - Red's Meadow
Alan Schimpff, Karen Lovett, Laura Rainey

This trip is cancelled. If interested, please contact Alan by Thursday 6/30.

For a night or two nights at Pumice Flat Camp, site #002, near Mammoth Lakes on the San River, elev. 10,000'. Pets (well-behaved) and RVs allowed. Flush toilets, hot water, and best of all, the views are near the Ansel Adams Wilderness, Pacific Crest and John Muir Trails. Bring a flag pole. Red's Meadow Camp Station is 2.5 miles at the end of Red's Meadow Road with a small general store and cafe. Expect several great hikes, a delicious 3rd of July BBQ (no, this is not a typo), and other surprises – all included in the price of the trip. Bring an appetizer to share for the 3rd. Because of the terrain and altitude, the hikes will be moderate to strenuous. There will be two sets of hikes for each day -- an easy to moderate and a moderate to strenuous. Questions? Call Alan at 310-589-9125.

July 10, Sunday

O: Pacific Palisades Urban and Beach Walk

Barbara Edwards, S.K. Chiou

The exclusive Castellammare neighborhood is perched just West of Sunset Blvd and North of PCH on a hill overlooking the ocean. This is a good

example of an architecturally diverse region, like many in the greater L.A. area, and has troves of narrow winding streets and hillside stairs. When money was no object, people have built castle-sized Mediterranean, Spanish, modern or ranch-style homes, and the Getty Villa. Many such homes from the 1920's are still standing, and are steeped in history...that is, Hollywood history.... The leaders will take you on a guided tour that promises to transport you back to the times and places where screen legends partied and perished. For example, hidden behind one of the moss covered walls, a screen siren died a brutal death, and her case remains a mystery even now. As a bonus, you will also enjoy cool ocean breezes and sweeping panoramas of the coastline. Then you will descend the hill, cross PCH and stroll back to Sunset on the beach. Meet at 9:30 AM for bagels and coffee. Walk starts at 10 AM. 3.5 miles, 400 ft gain total, Approx 3 hours. Bring lunch, water, comfortable walking shoes, hat, sunglasses and sunscreen. From PCH, go north (inland) on Sunset Blvd (by Gladstones). Go 1/3 mile and turn left at Las Liones Dr. Park at the first parking lot by the restroom at Topanga State Park. Free street parking on Las Liones Dr is also available. Although the Getty Villa is part of this neighborhood, it is not part of this activity, but is nearby for you to visit afterwards if interested.

July 16, Saturday

Sierra Club – Angeles Chapter Centennial Picnic for Posterity, at Malibu Nature Preserve

Includes barbeque lunch, nature walks, visit with famed mountaineers – Glen Dawson, Royal Robbins, Mountain Historians/Authors – Dan Arnold, Andy Selters, John Robinson. Book sales & book signings. Pose for personalized centennial poster. Continuous Chapter history presentations in our mini-theater. Historical photographic exhibit. Displays of vintage outdoors hiking/climbing/camping Gear. roll call of chapter groups and entities, Group photos of leaders & activists, a day of visiting with friends and fellow sierrans! \$20 Adults/ \$10 Children Under 12 Includes barbeque lunch and beverage. Send a self-addressed stamped envelope with check made out to “Sierra Club” to Elizabeth Pomeroy, 2111 E. Mountain St., Pasadena, CA 91104-4130. A map to the Malibu Nature Preserve will be included with the tickets. Please indicate if vegetarian menu preferred.

July 17, Sunday

O: Laguna Coast Ridge Walk
Jeff Johnson, Grace Hengst

Ridgetop walk in Laguna Coast Wilderness Park, 8.5 miles, 1800' gain/loss, mostly on fire roads, some significantly steep sections. Single track climb the first mile or so toward the ridge. Ocean and mountain views from exposed ridges, bring layers for weather possibilities, sun protection, trail footwear, lunch, water. Meet 8 a.m. at the Big Bend Staging Area, approx. 6.2 miles south of 405 on 133, in Laguna Beach (opposite Jeeps R Us, 3231 Laguna Canyon Road). Parking fee \$3. If rain has fallen a day or two before, call Jeff, 562-434-8473 the night before to check for

(Continued next page)

Weekly Griffith Park Conditioning Hikes

Please note changes in directions due to the closure of part of Crystal Springs Dr. between the LA Zoo and the Ranger Station, Mar-Nov 2011

What: Every Wednesday night, join us for a moderate (strenuous if you are out of shape) hike to Mt. Hollywood, 5 miles, 1145' gain/loss. This is a great mid-week workout. Lugsoled boots are best for traction, but some hikers wear sneakers. Bring a quart of water, snacks if you like, and a flashlight if not used to hiking in the dark. We have a few tiny breaks on the way up, stop at the top, gawk at the city lights until we get a chill, and then return to our cars by approx. 9:30 PM Dogs are

welcome; bring a leash and extra water. Rain cancels.

When: Every Wednesday, (except holidays) 7 PM sharp, end by 9:30 PM

Where: By the flagpole near the vending machines at the Crystal Springs Griffith Park HQ/Visitors Center, 4730 Crystal Springs Drive, LA. (Note: Mapquest, Google Maps, etc. may be misleading.)

Directions: (1) If driving north on I-5, exit at Griffith Park exit, 0.25 mi. beyond Los Feliz Bl. Make a right turn at the 3-way stop sign. Proceed 0.6 mi. and

turn in the driveway just before the Ranger Station. If you miss the driveway, proceed 0.1 mi, turn right at the stop sign, drive 0.15 mi. to the parking lot.

(2) From Los Feliz Bl., turn north on Riverside Drive, which becomes Crystal Springs Dr. Proceed 0.5 mi. to the 3-way stop sign, go straight, and then follow (1) above directions to the Ranger Station.

(3) Driving on Fwy 134 going west, exit at I-5 south toward Los Angeles. Exit I-5 at Los Feliz Blvd West toward Hollywood. Proceed to Signal light and turn right at Riverside Drive. Proceed as in (2) and (1) above to Ranger Station

parking lot.

(4) From Fwy 134 East, exit Forest Lawn, turn right at bottom of ramp. Proceed one block and turn left. Proceed one block and turn right on Griffith Park Drive (you'll be in front of Travel Town). Stay on Griffith Park Dr. and come all the way through the park – it's very dark and not lit with street-lights. Pass the golf driving range on your left, pass the playground/picnic area on your right. You'll finally come to a T-stop (Griffith Park Drive & Crystal Springs Road). Turn right. Proceed to the next stop sign at the Ranger Station and turn left. Drive all the way around behind the Ranger Station to park.

Outings and Events

possible changes of plan.

July 23, Saturday

**O: Marathon Beach Bike Ride & Activities
Mike Brostoff, Mary Conte**

A 45 mile round-trip bike ride along the coast from the Palisades to Palos Verdes. This trip is a series of beach activities strung together by biking. We will meet at 8:00 AM in the Palisades. We will bike for one mile and eat a leisurely breakfast at Back to the Beach, a restaurant with tables outside on the sand. We will then bike 20 miles through many beach communities until we reach Torrance where we will relax, lay out in the sun, swim, or whatever. Afterwards we will turn back and head to El Segundo where we will catch a 2:30 matinee at the Old Town Music Hall. The Old Town Music Hall is like walking into a movie theater from the 1930's. They have a Wurlitzer Organ complete with a wall full of neon pipes and other instruments. The movie is usually preceded by a sing-a-long and a Laurel and Hardy short. After the film, we will head to Venice for dinner at the C&O Trattoria. Following dinner, we will ride the Ferris Wheel on the Santa Monica pier in memory of Kathy Brizzard who suggested adding this event to the journey. We will complete our final leg of the journey returning to the Palisades with a magnificent view of the sunset over the Pacific. Bring: a bike; bike lock; spare tire and/or patch kit; bike pump; helmet; headlight; bathing suit and change of clothes if you plan to swim; beach towel; water (we can refill along the way); money for breakfast (about \$12.00), movie (\$8.00), dinner (about \$15.00) and extra for snacks along the way; library books you want to return (we pass the Marina Del Rey Public Library). For more info and to reserve a spot, contact Mike, 818-399-4035.

July 31, Sunday

**O: GLS Splash Bash Potluck!
Nancy Beverly, Grace Hengst**

GLS member Sherry Thomas is hosting a pool party at her Thousand Oaks home. Please bring bathing suits, towel, flip flops and a dish to pass. Easy-to moderate 3-mile loop hike in Sherry's neighborhood. Two miles on pavement, one on dirt, sneakers with tread are fine or hiking boots if you need them. Dogs welcome at party, must be on leash for hike (coyotes are in the 'hood). 2:00PM - 8:00PM. Mark your calendar! RSVP to Sherry, message or text, 818-674-2288.

August

Aug 4 - Aug 8, Thu - Mon

I: Kearsarge Pass (11,660'), Glen Pass (11,798'), Sixty Lake Basin (10,633'), Rae Lakes (10,544')

Eva Eilenberg, Dave Scobie

Join this small group on a big outing to the stunning Kearsarge Pass/Rae Lakes/Sixty Lake Basin area. Over 5 days, we'll cover over 36 miles and gain a total of more than 10,700'. On the night of Wed, Aug. 3, we'll car camp at Onion Valley—optional, but highly recommended for acclimatization and an early start on Thurs. After climbing over Kearsarge Pass, we'll camp at Charlotte Lake (Day 1: 7.5 mi, 2900' gain), then head over Glen Pass to explore the relatively remote Sixty Lake Basin area (Day 2: 7 mi, 2470' gain). Day 3 details are TBD, but it will be a layover day, with an optional XC trip to bag a nearby peak or meander through the Gardiner Basin west of our campsite. The following day, we'll take an XC route to connect to the PCT, past the Rae Lakes area and up to our last campsite, near the tarns at the top of Glen Pass (Day 4: 8 mi; 2000' gain) before heading back out to the trailhead (Day 5: 9 mi, 1860' gain). Send email, phone #s and recent backpacking experience, including comfort w/XC travel. Ldr: Eva Eilenberg (eeSierraClub@gmail.com), Asst: Dave Scobie.

August 13, Saturday

**O: Mt. Waterman Moonlight Hike
Nancy Beverly, Jeff Cuevas**

Come beat the heat and do a late afternoon / evening hike that features a great sunset at the top of Mt. Waterman – and then a return trip under the full moon. At five miles roundtrip, with 1300' gain/loss, this is a moderate hike (but can seem taxing if you're out of shape – Mt. Waterman is over 8000'). There is a potluck dinner at the top, so bring something to share – and be sure to bring your own plate, utensils and beverage. Also bring layers in case it's chilly after the sun goes down and a headlamp or flashlight for the darker sections of the trail on the return trip (for the most-part, though, the moonlight will be our source of illumination!). Well-mannered dogs are welcome but MUST be on leash at all times. Meet at the La Canada rideshare point at 4 p.m. Questions? Contact Nancy at 818-379-9940.

Aug 19 - Aug 21, Fri - Sun

**O: Crystal Lake Campout
Jeff Johnson, Grace Hengst**

Crystal Lake is finally open again...sort of. In 2002, the Curve Fire burned over 20,000 acres around and above Crystal Lake, damaging the access road (Route 39) and closing the area to the public for nine years. The road has just reopened, the campground has just reopened and, most astonishing, the little restaurant and the store are open, after being closed for almost 20 years. The restaurant has been completely renovated, I ate there and was pleasantly surprised. A few dozen campsites are available, new vault toilets, no dependable running water yet. No fee to camp (currently) but Adventure Pass required on every parked car. Saturday, hike the scenic Islip Ridge loop through the burn area (avoiding the heavily damaged Windy Gap trail), about 9 miles, 2500' gain/loss, and about 40 trees across the trail (currently, though the clearing work is ongoing). Then dinner on the restaurant patio (open to 7pm), campfire at the campsite. Sunday, a shorter hike, perhaps visit the Big Cienega and other wet areas above the recreation area to look for lemon lilies. \$10 per person in anticipation of typical fees being imposed, returned at camp if it's all still free by then. Send check made out to GLS to Jeff Johnson, PO Box 13073, Long Beach CA 90803. Questions? Call Jeff at 562-434-8473.

August 27, Saturday

**O: Urban Stair Walk – Silver Lake
Nancy Beverly, Amanda Smith**

We had a lot of fun on last summer's urban stair walk – let's do another one! This is a three-mile loop through "Franklin Hills East" with lots of hilly streets and steep stairs – at one point you'll do a stretch of 167 stair steps. Whew! Bring: a liter of water, a snack, sunscreen, hat, good walking shoes or hiking boots. Meet at 9 a.m. in front of the Casita Del Campo Restaurant, 1920 Hyperion Ave. Questions? Contact Nancy @ 818-379-9940.

Future Outings

Sep 2 - Sep 6, Fri - Tue

**O: Morro Bay State Park
Barbara Edwards, Grace Hengst**

The Morro Bay trip is SOLD OUT. Please contact leader if interested in wait list.

Join us for an end of the summer Labor Day camping trip. Morro Bay is considered to be the largest, least disturbed saltwater marsh on the California coast. This magnificent natural area provides a haven for an extraordinary range of bird life. It is a major stop on the pacific flyway for

Outings and Events

migratory birds, and around 70,000 birds may be seen on the bay on a given day. It is both a State and National Estuary. Morro Bay State Park is within minutes of a heron rookery, Montaña de Oro State Park, the El Moro Elfin Forest and Audubon's Sweet Springs Nature Preserve. The park is located 200 miles northwest of L.A. Some activities include: hiking at nearby Montana de Oro, kayaking or walking in estuary, birdwatching, or strolling into town for fresh seafood. We have a group campsite and hot showers are available. Dogs are permitted but are not allowed on any State Park trails and must be on leash at all times. Per person, \$55 for 3 nights camping and all parking fees. Some RV space available. Send check (made out to GLS) and email address to: Barbara Edwards 1739 S. Sherbourne Dr. L.A. 90035.

Sep 10 - Sep 11, Sat - Sun

O: Ediza Lake Backpack Marie Ammerman, Dora Olea

Seven miles one-way, but less than 2000 feet of gain - sound good? We'll hike in from Agnew Meadows, through soaring trees, alongside rocky streams, past Shadow Lake to Ediza Lake, lying under the dramatic peaks of the Ritter Range. We'll set up camp and explore the area; spend a night by Ediza under the stars, and head back the next day. Sign up for Ediza Lake runs from now to August 22nd; fee is 8 dollars/person. Space is limited. Send recent conditioning and check made out to GLS for 8 dollars to: Marie Ammerman 423 E. Elmwood Ave. Apt. F Burbank CA 91501. Please include contact information. Stats: 14 miles RT, approx. 1500' gain, beginning above 7000'. Questions, contact Marie at ammermanm@yahoo.com or at 818-842-6401.

September 25, Sunday

O: Barbecue, Hike, Sycamore St. Beach Dora Olea, Judith Demarah

More info later.

October 8, Saturday

O: Verdugos in a Loop Dora Olea, Amanda Smith

Come on out for a local hike in the Verdugos and enjoy a potluck among the trees while looking at Griffith Park from a different perspective. A moderate challenge from the south end to the North. About 6 miles with 1700' feet elevation gain. Approx time 4 hrs. After going up on a challenging steep winding uphill we will take a break to for the potluck and enjoy the magnificent San Gabriel Mountains to the right, and the Griffith Park to the left. We then go on a moderate fire road downhill and back down to the Stough Canyon Nature Center. Wait!, we are not there yet! We need to go around and between the bottom of the canyon and the golf course before we can reach the cars. Bring lugsole shoes, water, something to eat to share, trekking poles, and a hat. Dogs must bring their own water. Meet at the trail head at 9:00 am. at the Wildwood Canyon Park on Harvard Rd. in Burbank. From the I-5, take Alameda Avenue exit east and follow to Sunset Canyon Blvd. Left on Sunset Canyon, then about a mile to a right on Harvard Rd.; park is on your right about a quarter mile up. Park in the large lot along the road. Rain cancels.

October 16, Sunday

O: Beverly Hills Walk Barbara Edwards, TBA

More info later.

November 5, Saturday

O: Cheseboro Canyon Trail Dora Olea, Amanda Smith

More info later.

November 13, Sunday

O: Porter Ranch Dora Olea, Grace Hengst

More info later.

Nov 24 - Nov 27, Thu - Sun

O: Thanksgiving Desert Outing Susan Campo, Barbara Edwards

Come join the GLS family (limited to 30 participants) for a wonderful Thanksgiving dinner at our hotel in Beatty, Nevada on Thurs. Nov 24. We will be staying where the action is! Enjoy evening entertainment and scenic exploration / hiking during the day. For easy and interesting hikes Barbara will be leading an URBAN GHOST TOWN WALK. On another day she will be walking around the Ubehebe Crater, visit the renowned and beautiful Scotty's Castle. Susan has scouted out something NEW this trip that you won't want to miss if you are so inclined and fit (leader's approval required). We will climb Whaguyhe Peak (second highest in the Grapevine Mts.) and another surprise, reachable only by high clearance vehicles. This trip includes Thanksgiving dinner, some fun surprises at the hotel and 3 nights lodging, non-smoking two per room for a total of \$130 each. (If you need a single room the total is \$234 with no roommate.) To reserve your spot you must first e-mail Susan Campo. Your reservation will be confirmed when you send your check made out to GLS to the address she will indicate. susanlucillecampo@yahoo.com

February 19, Sunday

O: Snowshoe Hike, Mt. San Jacinto Kirk Olsen, Dora Olea

More info later.

March 25, Sunday

O: O'Melveny Park Dora Olea, Jeff Johnson



More info later.



One of these pictures shows the GLS booth at Long Beach Pride. Can you tell which one was us?



July and August 2011

Sunday	Monday	Tuesday	Wednesday	Thursday	Friday	Saturday
JUL 3	4 <i>end Red's Meadow</i>	5	6 Griffith Park	7	JUL 1 July 4th at Red's Meadow Alan, Laura, Karen <i>through Tuesday</i> 8	2 9
10 Pacific Palisades Urban and Beach Walk Barb, SK	11	12	13 Griffith Park	14 full moon 	15	16 <i>Angeles Chapter Centennial Picnic</i>
17 Laguna Coast Wilderness Park Jeff J., Grace	18	19	20 Griffith Park	21	22	23 Marathon Beach Bike Ride & Activities Mike, Mary
24	25	26	27 Griffith Park	28	29	30
31 GLS Splash Bash Potluck Nancy, Grace	AUG 1	2	3 Griffith Park	4 Sierra Peaks Backpack Eva, Dave <i>through Monday</i>	5	6
7	8	9	10 Griffith Park	11	12	13 full moon  Mt. Waterman Moonlight Hike Nancy, Jeff C.
14	15	16	17 Griffith Park	18	19 Crystal Lake Campout Jeff J., Grace <i>through Sunday</i>	20
21 <i>Crystal Lake end</i>	22	23	24 Griffith Park	25	26	27 Urban Stair Walk in Silverlake Nancy, Amanda
28	29	30	31 Griffith Park	SEPT 1	2 Morro Bay State Park Barb, Grace <i>through Tuesday</i>	3

GLS Leader Contact Information

Please call after 9 AM and before 9 PM

Alan Schimpff	310-589-9125	alanschimpff@netscape.net	Nancy Beverly	818-379-9940	nancybeverly@sbcglobal.net
Amanda Smith	323-646-0771	queenpin@earthlink.net	Pete Geissler	626-824-6778	dtmquest@yahoo.com
Anna Baum	310-990-0610	ambaum@dslextreme.com	Robin Ridinger	310-293-2446	rridinger@gmail.com
Anne Mullins	323-522-6640	hike2thepeak@gmail.com	S. K. Chiou	714-554-9513	skchiou@yahoo.com
Asher Waxman	323-876-2889	amuirman@yahoo.com	Susan Campo	626-688-8642	susanlucillecampo@yahoo.com
Barbara Edwards	310-839-0593	greyhound@sbcglobal.net	Teresa Nick	612-384-0421	nickx002@tc.umn.edu
Beth Epstein	562-439-0646	b.epstein@verizon.net	Tom Molloy	310-589-9125	tomsmolloy@yahoo.com
Christy Varni	562-489-4599	cvarni2001@yahoo.com			
Dawn Wilson	612-384-0180	wilson-dawn@comcast.net			
Diane Ru	626-688-8642	zappydz@excite.com			
Dora Olea	818-765-7297	doraolea@yahoo.com			
Eva Eilenberg	323-803-0457	eesierraclub@gmail.com			
Grace Hengst	323-227-6444	gracehikes@roadrunner.com			
Heather Sargeant	909-336-2836	heathercsoo@aol.com			
Jeff Bates	310-452-4929	jbatesla@aol.com			
Jeff Cuevas	626-644-9879	cuevasj@wellsfargo.com			
Jeff Johnson	562-434-8473	jgj@cheerful.com			
Judith Demarah	818-451-8403				
Karen Lovett	562-438-3418	klovett2000@hotmail.com			
Kirk Olsen	562-434-8675	kso@kirkolsen.com			
Laura Rainey	562-438-3418	geowmn@verizon.net			
Marie Ammerman	818-842-6401	ammermanm@yahoo.com			
Mike Brostoff	818 399-4035	mbros4162@yahoo.com			

GLS Outings Volunteers

Mike Brostoff, Outings Schedule

Contact Mike about scheduling outings, to check for available dates, and to submit writeups

Dawn Wilson, Outings Liaison to Angeles Chapter

Contact Dawn about questions of leadership requirements and Sierra Club Outings Policy. Dawn is the primary person to read the communications from the Angeles Chapter regarding outings and inform the rest of the leaders.

Laura Rainey, Weekly Reminder

Laura sends out the weekly email announcing upcoming events. If an event needs to be altered or canceled after publication, e-mail Laura and cc Mike.

Dave Benson, Outings

Submission to Angeles Chapter

Outings to be published in the Angeles Chapter Schedule must adhere to Chapter formatting guidelines. Mike B. forwards outings for the chapter schedule to Dave, who ensures that they meet these guidelines before sending them to the Chapter.

Anne Mullins, Trail Maintenance/Leader Meetings

Three times a year, we volunteer for trail maintenance for one of the local parks. Afterward, we hold a potluck followed by a leaders meeting. Anne coordinates the trail maintenance work and the potluck. Mike facilitates the leaders meeting.

Important Outing Information

Waiver

To participate in a Sierra Club outing, you must sign a liability waiver. If you would like to read a copy of the waiver before the outing, go to: <http://www.sierraclub.org/outings/chapter/forms/>, or call 415-977-5630.

Rating Codes

These codes indicate the technical difficulty, not the strenuousness.

O Applies to uncomplicated outings such as hikes on trails or the equivalent (with minimal navigation skills).

I Includes outings that involve cross-country travel where navigation is necessary. Rougher ground than "O" outings may be traversed, and use of hands for balance may be necessary. Climbing level: 2nd class terrain.

C Events under external control of a non-Sierra Club entity, (i.e. ranger, guide, concessionaire).

Outing Reservations

Reservation fees of from \$5-\$15 are refunded only when you show up and if they aren't needed to offset costs.

Cancellation policy on more expensive trips is as follows: Cancellation within 30 days, no refund without replacement. If your spot is filled, 90% will be refunded. This policy is in effect unless the leader states otherwise in writing. Always send two SASEs, contact and drive/ carpool information. Make checks payable to "GLS".

Dogs

For most people, the presence of a well-behaved dog can be entertaining, or at worst a mild annoyance. However, this is not true for everyone. Some people

suffer from various levels of fear of dogs. Because of this, and the potential intrusion on wildlife, the Sierra Club policy is that dogs are not allowed on Club outings unless the write-up states DOGS OK. Make sure you bring adequate food, water, a bowl, and a long leash.

Seller of Travel Notice

CST 2087766-40. Registration as a seller of travel does not constitute approval by the State of California.

Adventure Pass

National Forests in Southern California (Los Padres, San Gabriel, San Bernardino, and Cleveland) require parked cars to display an Adventure Pass. The pass is available from ranger stations, sporting goods stores, and other local merchants and costs \$5 per day or \$30 per year. Plan on getting it before your outing, as most outlets do not open early. Many

Sierra Club members dispute this user fee and protest it by not buying a pass, possibly incurring a ticket. The choice is yours.

Carpooling

To facilitate the travel logistics for outings, participants often make carpooling arrangements. The Sierra Club does not have insurance for carpooling arrangements and assumes no liability for them. Carpooling, ride-sharing, or anything similar is strictly a private arrangement among participants. Participants assume the risks associated with this travel.

Rideshare Points

Directions to all rideshare/ carpool points in the Angeles Chapter Schedule of Activities or at: <http://angeles.sierraclub.org/pvsb/pages/rideshare.html>

La Canada Rideshare Point

Exit 210 at Rte 2 / Angeles Crest Hwy. Go N 1/4 mi on Rte 2, park at curb on right, on long uphill.

TRACKS

SIERRA CLUB/GLS
P.O. BOX 1300
SOUTH PASADENA, CA 91031-1300

TRACKS

Subscribe to TRACKS, the GLS newsletter, and find out about all the GLS outings and events every month. You do not need to be a Sierra Club member to subscribe.

Name: _____

Address: _____

City, State, Zip: _____

Email: _____

- New Renewal Gift Change of Address
- Send print TRACKS by US mail \$15 - 1 yr; \$35 - 3 yr
- Send email TRACKS (pdf file) \$10 - 1 yr; \$20 - 3 yr
- Send print and email TRACKS \$25 - 1 yr; \$55 - 3 yr

Fill in this form and send it with a check made out to GLS to:
GLS
P.O. Box 1300
South Pasadena, CA 91031-1300



Contributions, gifts and dues to the Sierra Club are not tax-deductible; they support our effective citizen-based advocacy and lobbying efforts. Of your dues, \$7.50 goes for a subscription to *Sierra* magazine, and \$1 for your chapter newsletter.

Name: _____

Address: _____

City, State, Zip _____

Category:	Individual	Joint	Mail to:
Introductory	\$25		Sierra Club Membership Dept. P.O. Box 52968 Boulder, CO 80322
Regular	\$39	\$47	
Supporting	\$75	\$100	
Contributing	\$150	\$175	
Life	\$1000	\$1250	
Senior	\$24	\$32	
Student	\$24	\$32	
Limited Income	\$24	\$32	

When you join the Sierra Club, please use this form. The FRIP no. on the form brings part of your membership dues to GLS

FRIP#
F94QW04721