

# TRACKS



September/October 2011

Volume 24, No. 5

On the web: <http://angeles.sierraclub.org/gls/>



## Weekend in the San Gabriels

<b>GLS Info .....</b>	<b>2</b>
<b>Trip Reports .....</b>	<b>3 - 6</b>
<b>Conservation Notes.....</b>	<b>6</b>
<b>Outings &amp; Events.....</b>	<b>7 - 9</b>
<b>Calendar .....</b>	<b>10</b>
<b>GLS Leader Contact Info</b>	<b>11</b>
<b>Important Outing Info.....</b>	<b>11</b>

*Jeff Johnson, story and pictures*

We camped August 19-21 at the just-reopened Crystal Lake Recreation Area. It had been closed since the 2002 Curve Fire, which burned tens of thousands of acres in the Angeles National Forest and damaged Route 39, the only access road. Now, the campground is open again "as-is," which means no fees, no attendants, no water, a couple of toilets, and good luck to you!

And it was crowded. By midday Friday, every available campsite was occupied. Fortunately for us, Grace got there early, then Marie, and between them they staked out enough space for GLS.

One other change there is the reopening of the old Crystal Lake store, closed longer than I can remember. This addition partly offsets the absence at the campground of... hmm... adult supervision.

Our big Saturday hike was up to Islip Ridge. A lot of the mountainside has been denuded by pine bark beetles as well as by fire, so many trees were dead and down, and many across the trail. We saw lots of shrubby low growth where we would have seen mature forest years ago.

A highlight of that hike was the bear that crossed our path near the top of Islip

*(Continued on page 3)*

## From the Chair

There's a 1923 Harold Lloyd movie called *Safety Last!* You probably have seen the still picture from it – Harold is hanging from a giant clock over a city street. On a more serious note, it's been quite a summer for mishaps – at Yosemite and even at our local Eaton Canyon.

In the Sierra Club, we're more inclined to go with Safety First.

Here are some thoughts that were going through my mind when we were nearly to the top of Mt. Waterman on August 13:

- We're completely out of daylight...
- The moonlight is lovely but not quite enough to illuminate the trail...
- This section of the trail is sketchy because it's a "use" trail not the official trail...

- Using the official trail will take several more minutes to get to the peak – with two dozen hikers, things are taking longer than with a small group...
- It's much later than when we normally are at the peak (which would've been in daylight – a car wreck on Highway 2 delayed us)...
- The big rocks here are just as groovy as the ones at the top, and besides, we can barely SEE the rocks – either here or at the top...
- I don't want to get lost with 25 other hikers on my heels...

So what looked like a split decision when I made everyone halt, actually had a lot of thinking behind it. We enjoyed the banana bread dessert right where we were. We got back to the cars with no mishaps.

*Nancy Beverly*

## GLS 25th Anniversary

Next year will be the 25th year of GLS. We are beginning to plan what we might do to celebrate, and we want your ideas. Is there a project that you would like to help with? What sort of articles would you like to see published in Tracks?

Please tell any of the management committee members about your ideas.

## GLS Management Committee Meeting, July 6, 2011

Amanda, Jeff J., Nancy, Sharon, and SK were on the call.

Since Jeff Cuevas is now in the hospital, we discussed getting checks from the PO box and depositing them. Grace has a key. SK can help with bank info. New subscription info can go to Mike.

We discussed refunding for the cancelled Red's Meadow trip. Alan, Karen, and SK will work it out when they are all available.

We discussed the Mission Outdoors Stakeholder Survey on Survey Monkey, a management initiative from the Sierra Club, asking us for information about our group and goals. Nancy is filling it out. The question "Summarize in your own words the top three goals for your group/section/chapter" was the

start of a conversation. One conclusion was that increasing our subscribership is a project rather than a goal. We discussed the suggestion of trying to organize outings with kids.

Our special subscription offer brought in 6 new subscribers from Long Beach Pride and 4 from Meetup. Also at Long Beach Pride, we collected about 200 email addresses for a free PDF issue of Tracks.

We discussed our regularly scheduled leader meetings and trail maintenance events, which have had dwindling participation. It might work better if we do them separately. Perhaps schedule the leader meeting as a conference call. Amanda will ask Anne and Nancy will ask Mike where they would like to go with these events, and what would make it

easier for them.

We now have 250 members on Meetup, and these people are showing up on hikes, so it seems to have worked out well. Sharon suggests that we ask people who come to us from Meetup what they would like, as guidance when we are planning new hikes. Our Meetup renewal is up, at \$72, and all felt that it was well worth it.

We discussed various award possibilities for the holiday party.

Sharon would like to get some of our events listed with Lavendar Ladies, and will look into that.

We need to start thinking about our nominees for the management committee for next year. The terms of Nancy, Jeff, and SK run out this year.

*Jeff Johnson*

## Information about GLS

**General questions about GLS**, call Grace at 323-227-6444 or Mike at 818 399-4035.

**Questions about a specific event**, please call the leaders listed in the schedule. Contact info is inside the back page.

**Sign up for the FREE GLS email list**, with a weekly email digest of GLS events, go to: <<http://angeles.sierraclub.org/news/MailingLists.asp>>. Your email address remains confidential and is not displayed to others.

## Next GLS Management Comm. Meeting

The next GLS management committee meeting is scheduled for **Thursday, September 29, at 7pm**. Committee members will meet by conference call.

GLS management committee meetings are (usually) held about every two months, on weeknight evenings, by conference call. All GLS subscribers are welcome.

You may call one of the committee members to confirm meeting time, how to call in, or ask about the agenda, or for other information.

### GLS Mission

The Gay & Lesbian Sierrans Section of the Angeles Chapter fosters the purposes of the Sierra Club by making available a wide range of events for gays, lesbians, and their friends. These activities include conservation, education, hikes, bike rides, beach walks, car camps, boat trips, social gatherings and fundraising.

### GLS Newsletter

The GLS newsletter, TRACKS, is published six times a year. Annual subscriptions are \$15 for issues sent by US mail, \$10 for issues sent in PDF format by email, \$25 for both. Three year subscriptions are, respectively, \$35, \$20, and \$55. Send subscription requests and related membership correspondence to: GLS, P.O. Box 1300, South Pasadena CA, 91031-1300.

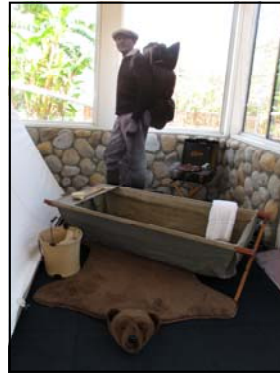
### Mgmt. Committee

**Nancy Beverly**, Chair  
**Amanda Smith**  
**Jeff Johnson**  
**Sharon Hartley**  
**SK Chiou**, Treasurer

### Other GLS Volunteers

**Membership**,  
 Jeff Cuevas  
**Conservation**,  
 Tom Molloy  
**Webmaster**,  
 Alan Schimpff  
**TRACKS Editor**,  
 Jeff Johnson

.....  
**Our outing volunteers are listed on page 11.**



John Robinson and Royal Robbins signing books under the trees. Ron Silverman, Bob Cates, and

Glen Dawson in the Nature Center. Part of an exhibit of historic camping paraphernalia. Caves

passed on the hike on the Chumash Trail. Kirk and Barry posing for a custom event poster.

## Angeles Chapter 100th Birthday Picnic

By Murray Aronson

The Angeles Chapter of the Sierra Club celebrated its 100th birthday on Saturday, July 16, 2011 with a festive picnic at the Malibu Nature Center. This event was publicized in the various newsletters and papers of the many Angeles Chapter's groups and activity sections, including our own.

The day of the picnic was Carmageddon Day One for which the media had put the fear of God in Angelenos. I left West Hollywood late in the day. The traffic on Sunset Blvd and the Pacific Coast Highway was light. When I arrived at the Malibu

Nature Center, lunch was still being served. The menu consisted of barbecued beef and chicken, potato salad, coleslaw, wine, and of course birthday cakes. There were many familiar faces at the picnic, but due to Carmageddon fears, a number did not make it. Outdoor writers such as Royal Robbins and John Robinson among others were there signing and selling their various books, along with amiable chatting. Glen Dawson, active in the Sierra Club since 1930 and now age 99, was also there.

There was a sizable GLS contingent at the Angeles Chapter birthday picnic. Among the friendly faces were Rodger

Steele, Mark Wren, Kirk Olsen, Barry Klein, Jeff Johnson, Jeff Bates and Dai Le. Ingeborg Prochazka was also around. I'm told she was doing a hike. Before the picnic broke up, members of the Photography Section arranged cameras so that there would be an impressively full shot of everyone attending. I am looking forward to seeing that photograph.

My drive home along PCH was pleasant, with little traffic. Our Pacific coast is really beautiful. The Sierra Club and the Angeles Chapter remain vigilant in its protection, along with the rest of our Golden State. Here's to another 100 years. Happy Birthday Angeles Chapter!

## San Gabriels Weekend

(Continued from the front page)

Ridge. It was just ambling down the trail. When we all yelled, it stopped, waited, then wandered a way down the slope, sat down and started scratching itself.

Later in the hike, a telltale rattling hiss by the trail caused some of us to leap forward and some back, and a large rattlesnake fell into the trail. Once it made its way into the brush, we went on by.

It turned out that Ginger and Becky had gone up to Pinyon Ridge that day, and there they saw a fox. So we had three good wildlife sightings on our Saturday hikes.

That evening we had dinner at the Crystal Lake Cafe, food prepared by the new owner, Adam Samrah. He lives with his family in the onsite houses. He put his deposit down to buy the place the day before the fire in 2002. Nine year later, and after much improvement and bringing-up-to-code, the customers are finally arriving.

Sunday, we did a number of local hikes and found some interesting places to go when we return next year...to the to-be-reopened Deer Flats group campsites farther up the hill. The lively nightlife in the unmanaged campground this year was something we hope to avoid next time.



Below left, getting by one of the big trees over the trail. Below center, on Grace's front porch at camp. Below right, dinner at the Crystal Lake

Café, owner Adam Samrah standing in back. Above right, Twin Peaks and Mt. Waterman from our Islip Ridge lunch spot on Sat. (see page 5).

Front page: Where's the bear? We met a bear on our hike, but these hikers can't seem to find it. Can you find the bear in this picture?



# Pacific Palisades Neighborhood Walk

By Wendy T., story and photos

Neighborhood walks led by longtime GLS member Barbara Edwards are always a hit. That goes double when they feature the homes of Hollywood's rich and famous — there's always an amusing and often salacious tale lurking in the shadows. We got a good dose of colorful Hollywood lore when two dozen of us gathered on a beautiful sunny morning to explore the swanky Castellammare neighborhood of Pacific Palisades.

With breathtaking panoramic views of the ocean below, the winding streets of Castellammare became a favorite playground of stars, beginning in Hollywood's earliest days. One of those celebs was screen siren Thelma Todd. She enjoyed a dizzying rise to fame, only to have it all end abruptly and mysteriously.

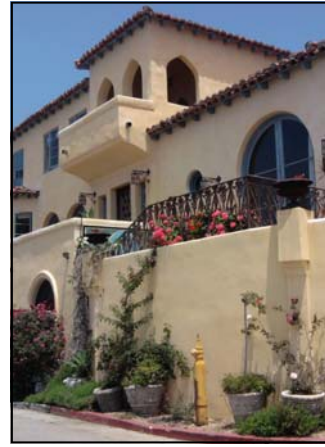
Thelma starred in about 120 films and was quite a party girl. She opened a roadhouse on PCH where she could have all her famous friends over. So our first stop was the ornate archway that was once the entrance to Thelma Todd's Sidewalk Café. Ironically, the sprawling Mediterranean-style building is now the office of a religious order. But back in the 1930s, it was a rip-roaring joint with a bordello upstairs.

Thelma's penthouse, perched atop the bordello, was supposedly the scene of a lot of wild action too. Craning our necks a bit, we could see that she had a grand view of the crashing surf below. Her lover, actor and man-about-town Roland West, lived nearby.

One night after a party at the legendary Trocadero restaurant, Thelma's chauffeur drove her home. Then, inexplicably, she walked up a steep set of hillside stairs to the next block. That's where she was found dead in her car, inside a closed garage. She was 29 years old.

The grand jury ruled it a suicide, the coroner said she died of carbon monoxide poisoning, and the cops called it an accident that happened while she was warming up her car. A lot of people to this day think it was a case of foul play... the question is, "Whodunit?" We followed Thelma's final footsteps up to a bright-blue garage door and held a lively on-the-spot debate: Who might have murdered her and why?

There was Roland West, who was involved in at least one other relationship at the time. The death-scene garage belonged to his ex-wife, so she was high on the list of possible suspects. At the Trocadero, Thelma had a nasty quarrel with her gangster ex-

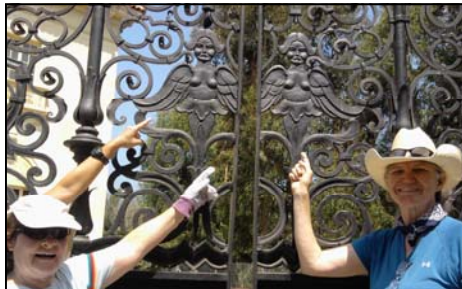


Left: the archway that used to be Thelma Todd's Sidewalk café...now occupied by a religious group. Center, actor John Barrymore's estate that he bought for Mary Astor...and where he courted various women. Right, leader Barbara tells about

the gruesome celebrity death behind that big blue door. Below center, some good girls pointing to some bad girls at the Pendleton gate. Bottom, the Pendleton mansion with life-size statues of women in various poses.

husband. And, someone was trying to extort money from her. There were reports her body was beaten and bruised, which argues against a suicide or accident. Alas, no obvious answers. Although Thelma died long ago, the legend surrounding her life and death lives on — the Thelma Todd Society has an entire web site about her.

We ambled forward, past blocks of homes oozing wealth and splendor. One of them was a palatial manor protected by wrought-iron gates. It was built by an heir to the Pendleton shirts fortune. Aha, the lesbian connection! Many of us thought it was a nice touch, too, that the estate wall was topped



with life-size statues of naked women in various graceful poses. And then we looked closer and discovered the scrollwork in the wrought iron fencing depicted naked women too... although *these* ladies had wicked expressions on their faces. No surprise when we learned that this manse was a popular party house for celebrities.

Then it was on to another house of vaguely ill repute — a 1928 Spanish villa that acting legend John Barrymore (that would be Drew's grandfather) bought for Mary Astor. It cascades in terraces across a steep corner lot with spectacular views of glittering Santa Monica Bay. Barrymore's marriages, divorces and drinking were the stuff of many Hollywood tales, and he reportedly carried on various affairs in that opulent setting.

We strolled back to our starting point on the Las Liones Drive end of Topanga State Park. The group gathered at a ramada to wish longtime GLS member Jo T. a happy birthday and to enjoy an appropriately decadent cake.



# Mount Waterman Moonlight Hike

By Marie Ammerman

The full moon lived up to its promise of craziness for the gang that went up to Mt. Waterman on August 13. First, we had a lovely, loony bunch, numbering 26 in all — a great turnout! It was with giddiness that we met at the La Canada rideshare point for the first time in a very long time to make the trip up. The atmosphere was festive in celebration of the opening of the 2 and Jeff C's return to active duty after his medical issues. He was in great shape and back to his usual power-hiker self — yay!



Left, potluck at Red Box, with the Harakmokngna American Indian Cultural Center in the background. Left below, exhibits inside the cultural center.

Right bottom, from a spot near the top of Waterman, the full moon rising. Above, last light on Islip Ridge (see page 3) and Hawkins Ridge from an overlook on the way up Waterman.



The craziness continued as we approached Red Box, where we were detoured into the parking lot. Sadly, a fatal car accident had happened further up the road, and the road was closed for a while until it could be cleared. Undaunted, Nancy and Jeff C., our fearless leaders, quickly changed plans, and we had our potluck right there at the Red Box picnic tables while waiting for the go-ahead to proceed on our way. Many people took advantage of the delay to explore the Haramokngna American Indian Cultural Heritage Center, a small museum and educational facility that has weather storms, fires, and politics for years. Check it out if you can!

After an amazing repast, our 9-car caravan once again hit the road, and we

arrived at the Waterman trailhead before sunset. It was a gorgeous hike, and we had glowing sunset colors as well as the full moon at one point- crazy beautiful, as they say. As the hike went on, we had more photo stops than water breaks, but that was understandable. By the time we neared the top, it was quite dark, though the moonlight tried hard to light our way in amongst the trees. In the end, Nancy and Jeff decided to stop us just short of the top, citing the rocky path and low visibility as safety issues. No one seemed to mind, and we had a wonderful time seated on some huge rocks, watching the quiet moon and munching on Tammie's amazing banana bread, which she hauled all the way up the trail for us.

The way back down was mysterious and lovely, and we had a magical hike back to the cars. Kudos to Nancy and Jeff for managing to keep us all safe, all together, and giving us the opportunity for a rare treat- moonlight in the Angeles National Forest. Thanks, you two!



## Conservation Notes

Tom Molloy

### Take action in just a minute on the Sierra Club Take Action site

Become a one minute activist. Make a difference with a choice of dozens of

worthy causes to associate your name with: <http://action.sierraclub.org/site/PageServer?pagename=TakeActionAll>

### Mr. Green

Hey Mr. Green is a Sierra magazine conservation advice column, online as well: <http://sierraclub.typepad.com/mrgreen/>

His recommendations are often unexpected.

### Thinking of installing solar?

The Sierra Club has made a fundraising arrangement with SunRun to “contribute \$50 for each supporter who requests a quote for solar panels.” Info on the Angeles Chapter website front page.

## The Mike Brostoff Beach Bike Tour

By Anna Baum, photos Mike Brostoff

GLS has offered a few epic experiences over the years; most involve packing and driving long distances. Thanks to Mike Brostoff, there’s an epic experience waiting for all of us each summer right here in Los Angeles. This 44-mile magical beach tour begins in the best way possible: breakfast! A one-mile flat roll south along the shoreline bike path from Temescal Canyon brings you to the beach café Back on the Beach. There, this year’s leaders Mike Brostoff and Mary Conte and riders Anna Baum, Jamie Nixon, and Norma Vasquez enjoyed delicious fare of omelet, pancakes, and French toast with our toes in the sand and our eyes on the sea...then we were off, wheeling through a gorgeous summer day through beach town after beach town.

This stretch of the adventure felt like a summer cultural anthropology session: as we rolled through the communities, with the blue sky and fresh breeze, the sparkling ocean to our side and the sun drenching it all, we saw hundreds of people crossing the bike path with smiles and grimaces, toys, dogs, strollers, skates, coolers, and barbecues. We passed along the funky Venice boardwalk of artists, pot vendors, evangelists, ruffians, and homeless folks; through the upscale harbor of Marina Del Rey with restaurants and yachts; then passed by the fishers of Playa Del Rey; next the large parties and families cooking

on the beach and flying kites in El Segundo, and on to Manhattan Beach, with cute houses lining the bike path one side of us, and surfers gliding down the waves on the other; then more groovy beach houses in Hermosa, except now sound-surrounded by pumping disco with hundreds of college kids having a blast-out volleyball tournament in costumes; then through Redondo with its fun-house pier full of families; and finally Torrance where the bike path ends at the edge of Palos Verdes. I felt like I was traveling through a layer cake, tasting all the flavors of our diverse communities.

At the beach in Torrance I frolicked in the waves while Mike napped in the sand and others snacked. Soon we headed back up the coast, this time stopping in El Segundo, where a short bike ride up a hill found us at the Old Town Music Hall. Entering this quaint building is a trip in a time machine. We were given a brief concert on the Mighty Wurlitzer Organ: spanning the entire stage, this instrument can render the sound of a full orchestra, and was used to accompany silent movies. We saw the 1953 film *Ma and Pa Kettle on Vacation* featuring Marjorie Main, reputed to be one of the few in 1950s Hollywood to acknowledge being a lesbian. She was fabulous and so was the popcorn. Then we were out in the bright sunshine again, cycling up to Venice to replenish ourselves

at the very popular (and crowded) C&O Trattoria. Their tagline is, “People don’t generally leave here hungry.” That’s because they fill up on the tasty golf-ball-size garlic rolls before their meal arrives!

This year we added a special stop in memory of GLS leader Kathy Brizzard, who passed on two years ago. She had been on the epic trip shortly before her death, and had remarked that a ride on the Ferris wheel would be a fitting end to the day. So we biked over to the Santa Monica pier, adding ourselves to the mass of fun-seeking humanity swarming over its wooden planks, and got in line. We were hoisted up to the top of the wheel at twilight, where we could see the moon, the sea, the city, and the reflection in each other’s faces of a day well spent. The last leg of the journey was brief as the group headed homeward, tired and satisfied and well-fed.

Mike moved from Michigan to Los Angeles on July 12, 1996. Nine days later, he ventured down the beach bike path to see what he would find. He’s been doing this trip annually ever since, and now he shares it with the GLS family. I’m glad I finally hopped on board; this unique trip contains all the imagination, playfulness, and adventurousness that GLS is known for. Mike describes this outing as “a series of beach activities strung together by biking”—a true GLS garland of food, sun, and fun.



# Outings & Events

## September

**Sep 2 - Sep 6, Fri - Tue**

**O: Morro Bay State Park**

**Barbara Edwards, Grace Hengst**

*The Morro Bay trip is SOLD OUT. Please contact leader if interested in wait list.*

Join us for an end of the summer Labor Day camping trip. Morro Bay is considered to be the largest, least disturbed saltwater marsh on the California coastline. This magnificent natural area provides a haven for an extraordinary range of bird life. It is a major stop on the Pacific flyway for migratory birds, and around 70,000 birds may be seen on the bay on a given day. It is both a state and national estuary. Morro Bay State Park is within minutes of a heron rookery, Montaña de Oro State Park, the El Moro Elfin Forest and Audubon's Sweet Springs Nature Preserve. The park is located 200 miles northwest of L.A. Some activities include: hiking at nearby Montana de Oro, kayaking or walking in the estuary, birdwatching, or strolling into town for fresh seafood. We have a group campsite and hot showers are available. Dogs are permitted but are not allowed on any State Park trails and must be on leash at all times. Per person, \$55 for 3 nights camping and all parking fees. Some RV space available. Contact Barb at greyhound@sbcglobal.net.

**Sep 10 - Sep 11, Sat - Sun**

**O: Ediza Lake Backpack**

**Marie Ammerman, Dora Olea**

*Must contact Marie promptly if interested,*

*818-842-6401 or ammerman@yahoo.com.*

Seven miles one-way, but less than 2000 feet of gain — sound good? We'll hike in from Agnew Meadows, through soaring trees, alongside rocky streams, past Shadow Lake to Ediza Lake, lying under the dramatic peaks of the Ritter Range. We'll set up camp and explore the area; spend a night by Ediza under the stars, and head back the next day. Fee is 8 dollars/person. Space is limited. Check made out to GLS for 8 dollars to: Marie Ammerman 423 E. Elmwood Ave. Apt. F Burbank CA 91501. Please include contact information. Stats: 14 miles RT, approx. 1500' gain, beginning above 7000'.

**September 25, Sunday**

**O: Big Sycamore Canyon Hike  
Dora Olea, Grace Hengst**

We originally were planning a hike and a barbeque, but that didn't work out, so we will have a potluck lunch along the trail instead. Our hike starts out on the Sycamore Cyn fire road, a peaceful wooded canyon with magnificent sycamores, and continues on side trails for variety. We plan on hiking 6 to 10 miles, 1000' gain and loss, making it an easy to moderate hike. In years past, the monarch butterflies would migrate here to hang around in the big sycamore trees in the fall, so we hope to see a few on this hike, though it is a bit early in the season. We should have lovely views of the ocean, as well as of the valleys and mountains. We plan on scouting the trails again in early Sept., and will ask Laura Rainey to send more specific hike info in the weekly email update. Bring 2 liters of water, wear lug

soles or good hiking shoes, bring sun protection, and a potluck lunch item to share. No dogs, as they are not allowed on State Park trails. Meet at 9am, and bring \$ for parking at Sycamore Cyn campground day use area. Carpooling is recommended. Directions to trailhead: Drive up PCH, Hwy 1, 32 miles from Santa Monica to Big Sycamore Cyn Campground in Point Mugu State Park. Questions? Call Grace 323-697-6886 or Dora 213-200-0239.

## October

**October 1, Saturday**

**O: All GLS Trail Maintenance Day  
Anne Mullins, Mike Brostoff**

Here's a chance to give back to the environment, have fun with the rest of the GLS, and find something good to eat, too! All members are encouraged to come out and help. There will be a range of activities available, from picking up trash to hard digging; there's something for everyone. A potluck lunch follows, with a special treat from Porto's Bakery to be provided (please don't bring a dessert!) We hope to add an even deeper sense of purpose to the GLS section, so please take this opportunity to come out and make a difference. What to bring: work gloves (if you have them), water, lug soles, potluck item. If interested, contact Anne, hike2thepeak@gmail.com.

**October 8, Saturday**

**O: Verdugos in a Loop  
Dora Olea, Amanda Smith**

Come on out for a local hike in the Verdugos and enjoy a potluck among the

*(Continued next page)*

## Weekly Griffith Park Conditioning Hikes

*Please note changes in directions due to the closure of part of Crystal Springs Dr. between the LA Zoo and the Ranger Station, Mar-Nov 2011*

**What:** Every Wednesday night, join us for a moderate (strenuous if you are out of shape) hike to Mt. Hollywood, 5 miles, 1145' gain/loss. This is a great mid-week workout. Lugsoled boots are best for traction, but some hikers wear sneakers. Bring a quart of water, snacks if you like, and a flashlight if not used to hiking in the dark. We have a few tiny breaks on the way up, stop at the top, gawk at the city lights until we get a chill, and then return to our cars by approx. 9:30 PM Dogs are

welcome; bring a leash and extra water. Rain cancels.

**When:** Every Wednesday, (except holidays) 7 PM sharp, end by 9:30 PM

**Where:** By the flagpole near the vending machines at the Crystal Springs Griffith Park HQ/Visitors Center, 4730 Crystal Springs Drive, LA. (Note: Mapquest, Google Maps, etc. may be misleading.)

**Directions:** (1) If driving north on I-5, exit at Griffith Park exit, 0.25 mi. beyond Los Feliz Bl. Make a right turn at the 3-way stop sign. Proceed 0.6 mi. and

turn in the driveway just before the Ranger Station. If you miss the driveway, proceed 0.1 mi, turn right at the stop sign, drive 0.15 mi. to the parking lot.

(2) From Los Feliz Bl., turn north on Riverside Drive, which becomes Crystal Springs Dr. Proceed 0.5 mi. to the 3-way stop sign, go straight, and then follow (1) above directions to the Ranger Station.

(3) Driving on Fwy 134 going west, exit at I-5 south toward Los Angeles. Exit I-5 at Los Feliz Blvd West toward Hollywood. Proceed to Signal light and turn right at Riverside Drive. Proceed as in (2) and (1) above to Ranger Station

parking lot.

(4) From Fwy 134 East, exit Forest Lawn, turn right at bottom of ramp. Proceed one block and turn left. Proceed one block and turn right on Griffith Park Drive (you'll be in front of Travel Town). Stay on Griffith Park Dr. and come all the way through the park — it's very dark and not lit with street-lights. Pass the golf driving range on your left, pass the playground/picnic area on your right. You'll finally come to a T-stop (Griffith Park Drive & Crystal Springs Road). Turn right. Proceed to the next stop sign at the Ranger Station and turn left. Drive all the way around behind the Ranger Station to park.

## Outings and Events

trees while looking at Griffith Park from a different perspective. A moderate challenge from the south end to the north. About 6 miles with 1700' feet elevation gain.

Approx time 4 hrs. After going up on a challenging steep winding uphill we will take a break to for the potluck and enjoy the magnificent San Gabriel Mountains to the right, and the Griffith Park to the left. We then go on a moderate fire road downhill and back down to the Stough Canyon Nature Center. Wait!, we are not there yet! We need to go around and between the bottom of the canyon and the golf course before we can reach the cars. Bring lugsole shoes, water, something to eat to share, trekking poles, and a hat. Dogs must bring their own water. Meet at the trail head at 9:00 am. at the Wildwood Canyon Park on Harvard Rd. in Burbank. From the I-5, take Alameda Avenue exit east and follow to Sunset Canyon Blvd. Left on Sunset Canyon, then about a mile to a right on Harvard Rd.; park is on your right about a quarter mile up. Park in the large lot along the road. Rain cancels. Questions? Dora 213-200-0239

### October 16, Sunday

#### **O: Beverly Hills Urban Walk Part 2 Barbara Edwards, S.K. Chiou**

Join us for a brisk walk through the shady quiet streets of Beverly Hills. On our way, we will stop briefly, to admire some former homes of celebrities (including stories of their sordid past). On our return, we will walk through the city's very popular, outdoor "Affaire In The Gardens" fall art show, which showcases more than 200 artists. Bring snacks and water. Plan on 3-4 hours. 5 miles r/t, 300 ft gain. Well-behaved, leashed dogs OK. Please note, that this will be a different walk than the one in 2009. Meet at 9 am at Beverly Gardens Park, on the northeast corner of Santa Monica Blvd and Beverly Dr. We will be near the "Beverly Hills" sign under the huge fig tree. Bagels ,cream cheese and coffee provided. Walk starts promptly at 9:30 am. Plenty of free parking in residential area, north of Santa Monica Blvd. Email leader, if questions. greyhund@sbcglobal.net.

### October 22, Saturday

#### **O: Mt. Waterman Hike Nancy Beverly, Jeff Cuevas**

We had such a fun time hiking Mt. Waterman in the moonlight, let's do it in the daylight! At six miles roundtrip, with

1300' gain/loss, this is a moderate hike (but will have your heart pounding if you're out of shape – Mt. Waterman is over 8000'). There is a potluck lunch at the top, so bring something to share – along with your own plate, utensils and beverage. If it's hot out, bring two liters of water, if it's cold, bring layers. Rain/snow cancels. Adventure Pass required to park, but we had enough people with passes last time that those who didn't have one were able to carpool. Well-mannered dogs are welcome but MUST be on leash. (Note: Nancy called the Forest Service and found out this is their policy, even though some websites say dogs can be without a leash as long as they can come on voice command; sorry, dog lovers...). Meet at the La Canada rideshare point at 9 a.m. (Exit Angeles Crest Highway from the 210, turn north towards the mountains and park on the east side of the street just over the freeway and beyond the Shell station, which is at 4530 Angeles Crest Highway.) Questions? Contact Nancy @ 818-379-9940.



### October 30, Sunday

#### **O: Solstice Canyon Grand Loop Tom Molloy, Alan Schimpff**

Moderate 6 mi, 1200' gain ridgeline hike on Solstice Canyon's Rising Sun, Sostomo, and Deer Valley loop trails, with ocean views! Hike through a dense canopy of alder, oak, and sycamore trees that shade the canyon's year-round stream. The trail we will take is relatively easy except for a moderately-strenuous climb up a short, single-track trail with an elevation gain/loss of 800' on the Sostomo trail.

Directions: Heading north on PCH, turn right at Corral Cyn. Rd. About a quarter mile up, you will see and drive through the gated entrance to Solstice Cyn. Pay the parking fee and drive past the first parking lot to get to the upper parking area. Hike will start promptly at 9 AM. Bring min. 2-quarts water, lugsole hiking boots for easy stream crossings, snacks, lunch & 10 Essentials. Halloween costumes optional. Questions? Contact Tom, 310-589-9125.

## Future Outings

### November 5, Saturday

#### **O: Cheseboro and Palo Comado Cyns Dora Olea, Amanda Smith**

Two Canyons in one loop in the Santa Monica Mountains. Cheseboro Canyon and

Palo Comado Canyon serve as an important wildlife corridor between the interior Transverse Ranges in the north and the Santa Monica Mountains to the South. There is a good chance of seeing deer, bobcats, coyotes, rabbits, and owl along the trail. In fact, these canyons have the largest concentration of birds of prey nesting sites. While looking for birds of prey on the sky, we will lunch in the Sheep Corral trail near the creek bed. Starting at Cheseboro Canyon Trail, we follow an old ranch road along a streambed through a valley oak savannah and coast live oak riparian zone. At 3.3 miles we could smell the odor of rotten eggs as part of the Sulphur Spring site. The Baleen Wall opens up the canyon to chaparral slopes. From Palo Comado Cyn, China Flat becomes into a view as breathtaking scenery. All along, Palo Comado Cyn offers a tapestry of canyon-bottom woods and slopes adorned with dense patches of chaparral and sandstone outcrops. A long moderate hike, 10.3 miles rt., 5 hours long with 1200 ft. gain /lost. Dog owners be aware that there may be fox tails growing along the route, as well as

the presence of mountain bikers. Bring lug soles, lunch, sunscreen, hat and sunglasses as well as plenty of water. Dogs must bring their own water. Bathrooms at the trailhead. Meet at the trailhead at 9:30 am. From the Valley, take 101 west to the Cheseboro Road exit. Turn right at the stop sign and head north on Palo Comado Canyon Road. At the next stop sign, turn right (north) onto Cheseboro Road. Parking at the end of the Cheseboro Canyon Rd. Rain cancels. Questions? Contact Dora at 213-200-0239 or doraolea@yahoo.com.

### November 13, Sunday

#### **O: Porter Ranch Trails Hike Dora Olea, Grace Hengst**

A suburban hike at it's finest! This Loop with its atypical trails ranging from dirt roads and broken pavement to surface streets never lets you forget where you are. It was once the location of remote vacation homes and horses owned by L.A.'s rich and famous. Porter Ranch now consists of a master-planned community of upscale suburban housing. It was the last portion of the San Fernando Valley to be developed. We will begin with a stroll along Aliso Creek, crossing a native plant restoration area before a contrasting saunter over a graded short hillside. Most of the trails utilize old roadbeds, with the exception of the Palisades trail. The 2-mile section of

## Outings and Events

this trail between Tampa Ave and Reseda Blvd offers fantastic views of the Valley, and would make a worthwhile hike on its own. This is a moderate hike, about 7 miles RT, with about 1000' gain/loss, in about 4 hours. Dogs welcome. Wear lug soles, bring sunscreen, 2 liters water, and a potluck lunch item to share. Meet 9am at the Aliso Canyon Park trailhead on Rinaldi St. From CA 118, exit at Reseda Blvd and head north. Turn right on Rinaldi St and look for the sign for Aliso Canyon Park on your left after 0.5 mi. There is no parking directly in front of the park, so proceed past the sign, make a U-turn, and park along the north side of Rinaldi.

Questions? Dora at 213-200-0239, Grace at 323-697-6886.

**Nov 24 - Nov 27, Thu - Sun**

**O: Thanksgiving Desert Outing**

**Susan Lucille Campo, Barbara Edwards**

Come join the GLS family (limited to 30 participants) for a wonderful Thanksgiving dinner at our hotel in Beatty, Nevada on Thurs. Nov 24. We will be staying where the action is! Enjoy evening entertainment and scenic exploration / hiking during the day. For easy and interesting hikes Barbara will be leading an URBAN GHOST TOWN WALK. On another day she will be walking around the Ubehebe Crater, visit the renowned and beautiful Scotty's Castle. Susan has scouted out something NEW this trip that you won't want to miss if you are so inclined and fit (leader's approval required). We will climb Whaguyhe Peak (second highest in the Grapevine Mts.) and another surprise, reachable only by high clearance vehicles. This trip includes Thanksgiving dinner, some fun surprises at the hotel and 3 nights lodging, non-smoking two per room for a total of \$130 each. (If you need a single room the total is \$234 with no roommate.) To reserve your spot you must first e-mail Susan Campo. Your reservation will be confirmed when you send your check made out to GLS to the address she will indicate. [susanlucillecampo@yahoo.com](mailto:susanlucillecampo@yahoo.com).

**Dec 29 - Jan 1, Thu - Sun**

**O: Grand Canyon New Years Celebration**

**Susan Lucille Campo, Alan Schimpff**

See the 7th Wonder of the World and World Heritage Site with WORLD CLASS



Rattlesnake above Crystal Lake.

hiking! We are offering an economic benefit; the price has been slashed by more than \$100 off the price of the same trip in 2009. This is a luxury trip that includes 2 nights lodging on the South Rim at the Thunderbird Lodge and 2 nights Lodging at the bottom of the Grand Cyn at Phantom Ranch. To participate you must be able to hike at least 13 miles, 5000 ft. decent and gain on different days. There will be optional hikes available on the lay-over day

at Phantom Ranch. Besides all lodging, breakfasts and dinners at the Ranch are included as well as New Year's Eve Party in the bottom of the Grand Cyn and a dinner celebration at the El Tovar after hiking out on Jan.1, 2012. Can drive home Monday, Jan. 2. The total

cost this year is \$535. First, you must email the Leader, Susan Campo followed by full payment to secure a spot. We were flooded with responses to the GRAND CYN. Outing; all the WOMEN's spots have already been taken. But a waiting list has been started. If you want your name on it, email Susan when you are sure you can go. There are still openings for MEN on the trip. Men can also check with Alan Schimpff for info, 310-589-9125.

**Feb 18 - Feb 20, Sat - Mon**

**O: Anza Borrego State Park**

**Barbara Edwards, Grace Hengst**

More info to follow.

**February 19, Sunday**

**O: Snowshoe hike, Mt. San Jacinto**

**Kirk Olsen, Dora Olea**

Join us for a leisurely snowshoe hike on groomed trails near the Palm Springs Aerial Tramway Mountain Station (elevation 8,516 ft.). Meet at the Valley Station at 10:30 am with snowshoes in hand - they can be rented at any good sports shop if you do not own them. Please allow time to park and ride the bus. We will purchase our tickets and ride up together. Once situated we will hike for approximately 3 hours and then eat a warm meal at the Mountain Station cafeteria. Distance and elevation gain will depend on our speed - approx. 3 miles and 500 ft. Ticket, weather and cafeteria information available at [www.pstramway.com](http://www.pstramway.com). Note: We have learned though experience that renting snowshoes at the top is not a viable option. Dress appropriately and bring water, snacks,

snowshoes and money for the tram & cafeteria. RSVP to Dora (213) 200-0239 or [doraolea@yahoo.com](mailto:doraolea@yahoo.com) so that we know to expect you.

**March 25, Sunday**

**O: O'Melveny Park**

**Dora Olea, Jeff Johnson**

The second-largest park in L.A. County yielding only to the expanses of Griffith Park on the opposite site of the Valley offers the best view of the San Fernando Valley. We will take a stroll along citrus groves, grassy fields, and a riparian canyon in this tranquil park situated in Granada Hills. The first 0.9 mile explores the initial section of the well-maintained lawns shaded by oaks and eucalyptus trees extended over a quarter-mile into Bee Canyon Trail. For a better view of the Valley and a good workout we will hike up the challenging Mission Point Trail that climbs over 1,000 ft in 1.5 miles. A moderate pace hike with approx. 4 miles round trip. 1,400 ft. elev.



Fox on Pinyon Ridge. Photo from Ginger

gain/loss. Short car shuttle. Bathrooms and water at the trailhead. K-9 welcome. Bring water, lug soles, sunscreen, and a potluck-lunch item to share. Meet 9 am. From CA 118, exit at Balboa Blvd. and head north 2.3 miles to Sesnon Blvd. Make a left on Sesnon, following it for just over 0.5 miles to the entrance of O'Melveny Park on the right. Free parking, carpooling is recommended. Questions? Dora at 213-200-0239.

## Other Events

*The following event is not sponsored or administered by the Angeles Chapter, which takes no responsibility and makes no representations or warranties about the quality, safety, supervision or management of the trip. This is published as a reader service because it may be of interest to recipients of this publication.*

**Bay Chapter GLS's trip to Shasta Lake over Labor Day weekend.**

There is room for 50 and we will be camped at Moore Creek on the McCloud arm of Shasta Lake. We have planned easy hikes nearby and more challenging hikes at Castle Crags and on the base of Shasta. We will host a potluck and an evening of Follies. Trip registration materials can be requested of Kelly Walker at [ms.kellywalker@gmail.com](mailto:ms.kellywalker@gmail.com) Trip fee is \$40 for Bay GLS subscribers, \$50 for non-subscribers. Please let Pam LoPinto ([pamlo@att.net](mailto:pamlo@att.net)) know if you have any questions. She hopes to see some of our LA brothers and sisters soon!

# September and October 2011

Sunday	Monday	Tuesday	Wednesday	Thursday	Friday	Saturday
<b>SEPT 4</b>	<b>5</b>	<b>6</b> <i>End Morro Bay</i>	<b>7</b> <b>Griffith Park</b> Amanda, Nancy	<b>SEPT 1</b> <hr/> <b>8</b>	<b>2</b> <b>Morro Bay</b> Barb, Grace <i>through Tuesday</i> <hr/> <b>9</b>	<b>3</b> <hr/> <b>10</b> <b>Ediza Lake Backpack</b> Marie, Dora
<b>11</b> <i>End Ediza Lake backpack</i>	<b>12</b> full moon 	<b>13</b>	<b>14</b> <b>Griffith Park</b> Nancy, Dora	<b>15</b>	<b>16</b>	<b>17</b>
<b>18</b>	<b>19</b>	<b>20</b>	<b>21</b> <b>Griffith Park</b> Eva Grace	<b>22</b>	<b>23</b>	<b>24</b>
<b>25</b> <b>Big Sycamore Canyon Hike</b> Dora, Grace	<b>26</b>	<b>27</b>	<b>28</b> <b>Griffith Park</b> Marie, Dora	<b>29</b> <b>Management Committee Meeting</b> Info page 2	<b>30</b>	<b>OCT 1</b> <b>All GLS Trail Maintenance Day</b> Anne, Mike
<b>2</b>	<b>3</b>	<b>4</b>	<b>5</b> <b>Griffith Park</b> Dora, Grace	<b>6</b>	<b>7</b>	<b>8</b> <b>Verdugos in a Loop</b> Dora, Amanda
<b>9</b>	<b>10</b>	<b>11</b> full moon 	<b>12</b> <b>Griffith Park</b> Eva, Grace	<b>13</b>	<b>14</b>	<b>15</b>
<b>16</b> <b>Beverly Hills Urban Walk Part 2</b> Barb, SK	<b>17</b>	<b>18</b>	<b>19</b> <b>Griffith Park</b> Amanda, Eva	<b>20</b>	<b>21</b>	<b>22</b> <b>Mt. Waterman Hike</b> Nancy, Jeff C.
<b>23</b>	<b>24</b>	<b>25</b>	<b>26</b> <b>Griffith Park</b> Nancy, Marie	<b>27</b>	<b>28</b>	<b>29</b>
<b>30</b> <b>Solstice Canyon Grand Loop</b> Tom, Alan	<b>31</b>	<b>NOV 1</b>	<b>2</b> <b>Griffith Park</b> TBA	<b>3</b>	<b>4</b>	<b>5</b> <b>Cheseboro and Comado Canyons</b> Dora, Amanda

# GLS Leader Contact Information

Please call after 9 AM and before 9 PM

Alan Schimpff	310-589-9125	alanschimpff@netscape.net
Amanda Smith	323-646-0771	queenpin@earthlink.net
Anna Baum	310-990-0610	ambaum@dslextreme.com
Anne Mullins	323-522-6640	hike2thepeak@gmail.com
Asher Waxman	323-876-2889	amuirman@yahoo.com
Barbara Edwards	310-839-0593	greyhound@sbcglobal.net
Beth Epstein	562-439-0646	b.epstein@verizon.net
Christy Varni	562-489-4599	cvarni2001@yahoo.com
Dawn Wilson	612-384-0180	wilson-dawn@comcast.net
Diane Ru	626-688-8642	zappydz@excite.com
Dora Olea	818-765-7297	doraolea@yahoo.com
Eva Eilenberg	323-803-0457	eesierraclub@gmail.com
Grace Hengst	323-227-6444	gracehikes@roadrunner.com
Heather Sargeant	909-336-2836	heathercsoo@aol.com
Jeff Bates	310-452-4929	jbatesla@aol.com
Jeff Cuevas	626-644-9879	cuevas777999@yahoo.com
Jeff Johnson	562-434-8473	jgj@cheerful.com
Judith Demarah	818-451-8403	
Karen Lovett	562-438-3418	klovett2000@hotmail.com
Kirk Olsen	562-434-8675	kso@kirkolsen.com
Laura Rainey	562-438-3418	geowmn@verizon.net

Marie Ammerman	818-842-6401	ammermanm@yahoo.com
Mike Brostoff	818 399-4035	mbros4162@yahoo.com
Nancy Beverly	818-379-9940	nancybeverly@sbcglobal.net
Robin Ridinger	310-293-2446	rridingerg@gmail.com
S. K. Chiou	714-554-9513	skchiou@yahoo.com
Susan Campo	626-688-8642	susanlucillecampo@yahoo.com
Teresa Nick	612-384-0421	nickx002@tc.umn.edu
Tom Molloy	310-589-9125	tomsmolloy@yahoo.com

## GLS Outings Volunteers

### Mike Brostoff, Outings Schedule

Contact Mike about scheduling outings, to check for available dates, and to submit writeups

### Dawn Wilson, Outings Liaison to Angeles Chapter

Contact Dawn about questions of leadership requirements and Sierra Club Outings Policy. Dawn is the primary person to read the communications from the Angeles Chapter regarding outings and inform the rest of the leaders.

### Laura Rainey, Weekly Reminder

Laura sends out the weekly email announcing upcoming events. If an event needs to be altered or canceled after publication, e-mail Laura, and cc Mike.

### Dave Benson, Outings

#### Submission to Angeles Chapter

Outings to be published in the Angeles Chapter Schedule must adhere to Chapter formatting guidelines. Mike B. forwards outings for the chapter schedule to Dave, who ensures that they meet these guidelines before sending them to the Chapter.

### Anne Mullins, Trail Maintenance/Leader Meetings

Three times a year, we volunteer for trail maintenance for one of the local parks. Afterward, we hold a potluck followed by a leaders meeting. Anne coordinates the trail maintenance work and the potluck. Mike facilitates the leaders meeting.

## Important Outing Information

### Waiver

To participate in a Sierra Club outing, you must sign a liability waiver. If you would like to read a copy of the waiver before the outing, go to: <http://www.sierraclub.org/outings/chapter/forms/>, or call 415-977-5630.

### Rating Codes

*These codes indicate the technical difficulty, not the strenuousness.*

**O** Applies to uncomplicated outings such as hikes on trails or the equivalent (with minimal navigation skills).

**I** Includes outings that involve cross-country travel where navigation is necessary. Rougher ground than "O" outings may be traversed, and use of hands for balance may be necessary. Climbing level: 2nd class terrain.

**C** Events under external

control of a non-Sierra Club entity, (i.e. ranger, guide, concessionaire).

### Outing Reservations

Reservation fees of from \$5-\$15 are refunded only when you show up and if they aren't needed to offset costs.

Cancellation policy on more expensive trips is as follows: Cancellation within 30 days, no refund without replacement. If your spot is filled, 90% will be refunded. This policy is in effect unless the leader states otherwise in writing. Always send two SASEs, contact and drive/carpool information. Make checks payable to "GLS".

### Dogs

For most people, the presence of a well-behaved dog can be entertaining, or at worst a mild annoyance. However, this is not true for everyone. Some people suffer from various

levels of fear of dogs. Because of this, and the potential intrusion on wildlife, the Sierra Club policy is that dogs are not allowed on Club outings unless the write-up states DOGS OK. Make sure you bring adequate food, water, a bowl, and a long leash.

### Seller of Travel Notice

CST 2087766-40. Registration as a seller of travel does not constitute approval by the State of California.

### Adventure Pass

National Forests in Southern California (Los Padres, San Gabriel, San Bernardino, and Cleveland) require parked cars to display an Adventure Pass. The pass is available from ranger stations, sporting goods stores, and other local merchants and costs \$5 per day or \$30 per year. Plan on getting it before your outing, as most outlets do not open early. Many Sierra Club members dispute this user fee and

protest it by not buying a pass, possibly incurring a ticket. The choice is yours.

### Carpooling

To facilitate the travel logistics for outings, participants often make carpooling arrangements. The Sierra Club does not have insurance for carpooling arrangements and assumes no liability for them. Carpooling, ride-sharing, or anything similar is strictly a private arrangement among participants. Participants assume the risks associated with this travel.

### Rideshare Points

Directions to all rideshare/carpool points in the Angeles Chapter Schedule of Activities or at: <http://angeles.sierraclub.org/pvsvb/pages/rideshare.html>

### La Canada Rideshare Point

Exit 210 at Rte 2 / Angeles Crest Hwy. Go N 1/4 mi on Rte 2, park at curb on right, on long uphill.

# TRACKS

SIERRA CLUB/GLS  
P.O. BOX 1300  
SOUTH PASADENA, CA 91031-1300

# TRACKS

Subscribe to TRACKS, the GLS newsletter, and find out about all the GLS outings and events every month. You do not need to be a Sierra Club member to subscribe.

Name: \_\_\_\_\_

Address: \_\_\_\_\_

City, State, Zip: \_\_\_\_\_

Email: \_\_\_\_\_

- New  Renewal  Gift  Change of Address
- Send print TRACKS by US mail \$15 - 1 yr; \$35 - 3 yr
- Send email TRACKS (pdf file) \$10 - 1 yr; \$20 - 3 yr
- Send print and email TRACKS \$25 - 1 yr; \$55 - 3 yr

Fill in this form and send it with a check made out to GLS to:  
GLS  
P.O. Box 1300  
South Pasadena, CA 91031-1300



Contributions, gifts and dues to the Sierra Club are not tax-deductible; they support our effective citizen-based advocacy and lobbying efforts. Of your dues, \$7.50 goes for a subscription to *Sierra* magazine, and \$1 for your chapter newsletter.

Name: \_\_\_\_\_

Address: \_\_\_\_\_

City, State, Zip \_\_\_\_\_

Category:	Individual	Joint	Mail to:
Introductory	\$25		Sierra Club Membership Dept. P.O. Box 52968 Boulder, CO 80322
Regular	\$39	\$47	
Supporting	\$75	\$100	
Contributing	\$150	\$175	
Life	\$1000	\$1250	
Senior	\$24	\$32	
Student	\$24	\$32	
Limited Income	\$24	\$32	

When you join the Sierra Club, please use this form. The FRIP no. on the form brings part of your membership dues to GLS

FRIP#  
F94QW04721